



**YAMAHA**

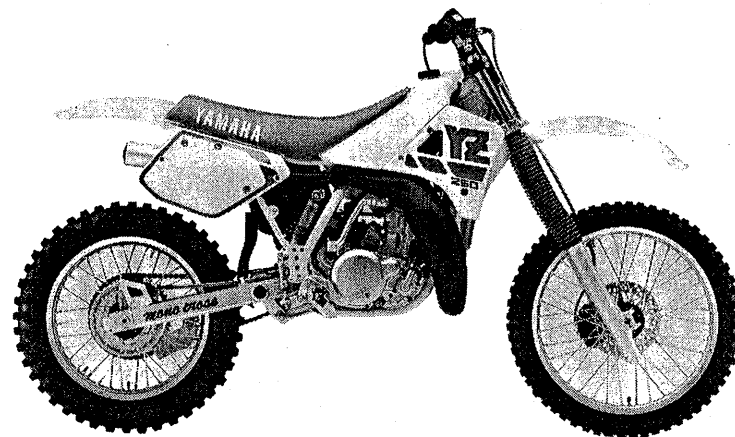
**PARTS CATALOGUE**

**YZ250'88 (2VM)**

**EUROPE**

**|82VM-300E2**

**A2**



A3

# FOREWORD

This Parts Catalogue is related to the parts in use for the Yamaha YZ250'88(2VM).  
When you are ordering replacement parts for the YZ250'88(2VM), refer to this Parts Catalogue and quote both part numbers and part names correctly.

1. Modifications or additions which have been made after issue of the Parts Catalogue will be announced in the Yamaha Parts News.

It is advisable that according to the Yamaha Parts News you make necessary corrections to the Parts Catalogue on hand to keep it up-to-date.

2. Abbreviations

The following abbreviations are used in this Parts Catalogue.

- U.R. Use size (thickness) and/or number as required.
- U.N. Use as many as you need.
- A.P. Alternate Parts
- L.M. Local Made
- F# Frame No. (Applicable machine No.)

3. The parts marked with (\*) in the parts number column of this Catalogue are not supplied with by Yamaha, those have to be found locally.

4. Parts, which are to be supplied in the form of assemblies, are listed with an indentation of one letter's space, and a dot ( . ) is put against the name of each part.

**EXAMPLE** CARBURETOR ASS'Y  
                   . JET, pilot  
                   . NOZZLE, main

5. Indication of No. of constituent parts for assembly

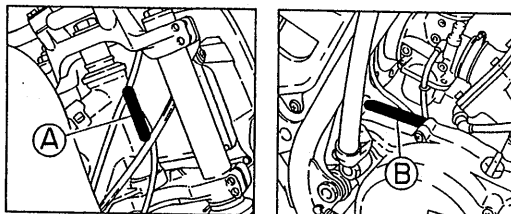
The numeral appearing to the right of each constituent part under the description indicates the quantity of such parts for each individual assembly unit.

**EXAMPLE**

Part No.	Description	Q'ty	Remarks
2F5-83310-60	FRONT FLASHER LIGHT ASS'Y	2	
115-83311-60	. BULB (6V-18W)	1	
1M1-83309-60	. REFLECTOR	1	

6. Initial Serial No. and Color Code

(A) Frame Serial No.	2VM-000101 and following
(B) Engine Serial No.	2VM-000101 and following



Color Code	Color Name	Abbreviate
36	CLEAN WHITE	W

7. Applicable colors of graphics are represented in the "Remarks" column by the letter(s) appropriately picked out of the full word(s) showing such colors.

**EXAMPLE**

Part No.	Description	Q'ty	Remarks
2N4-24110-00-X5	FUEL TANK COMP.	1	MAXIM RED
3J1-24240-10	. GRAPHIC, fuel tank set	1	for MXR

8. This parts Catalogue contains modified specs as opposed to the preceding one. The modified items are asterisked (\*) before their respective Ref. Nos. For the convenience of reference, Table of comparison between old and new is provided at the end of the text.

# CONTENTS

## ENGINE

Cylinder .....	B2 ~ B3
Governor .....	B4
Crankshaft. Piston .....	B5
Water Pump .....	B6
Radiator. Hose .....	B7
Intake .....	B8
Carburetor .....	B9 ~ B10
Exhaust .....	B11
Crankcase .....	B12
Crankcase Cover 1 .....	B13
Starter .....	B14
Clutch .....	B15
Transmission .....	C2 ~ C3
Shift Cam. Fork .....	C4
Shifter .....	C5

## CHASSIS

Frame .....	C6
Fender .....	C7
Side Cover .....	C8 ~ C9
Rear Arm .....	C10 ~ C11
Rear Suspension .....	C12
Steering .....	C13
Front Fork .....	C14 ~ D2
Fuel Tank .....	D3
Seat .....	D4
Front Wheel .....	D5
Front Brake Caliper .....	D6
Rear Wheel .....	D7 ~ D8

Rear Brake Caliper .....	D9
Steering Handle. Cable .....	D10
Front Master Cylinder .....	D11
Stand. Footrest .....	D12
Rear Master Cylinder .....	D13
Generator .....	D14
Handle Switch. Lever .....	D15
Electrical 1 .....	E2

## ALTERNATE PARTS

Alternate 1 (Chassis) .....	E3
-----------------------------	----

## REPAIR KIT

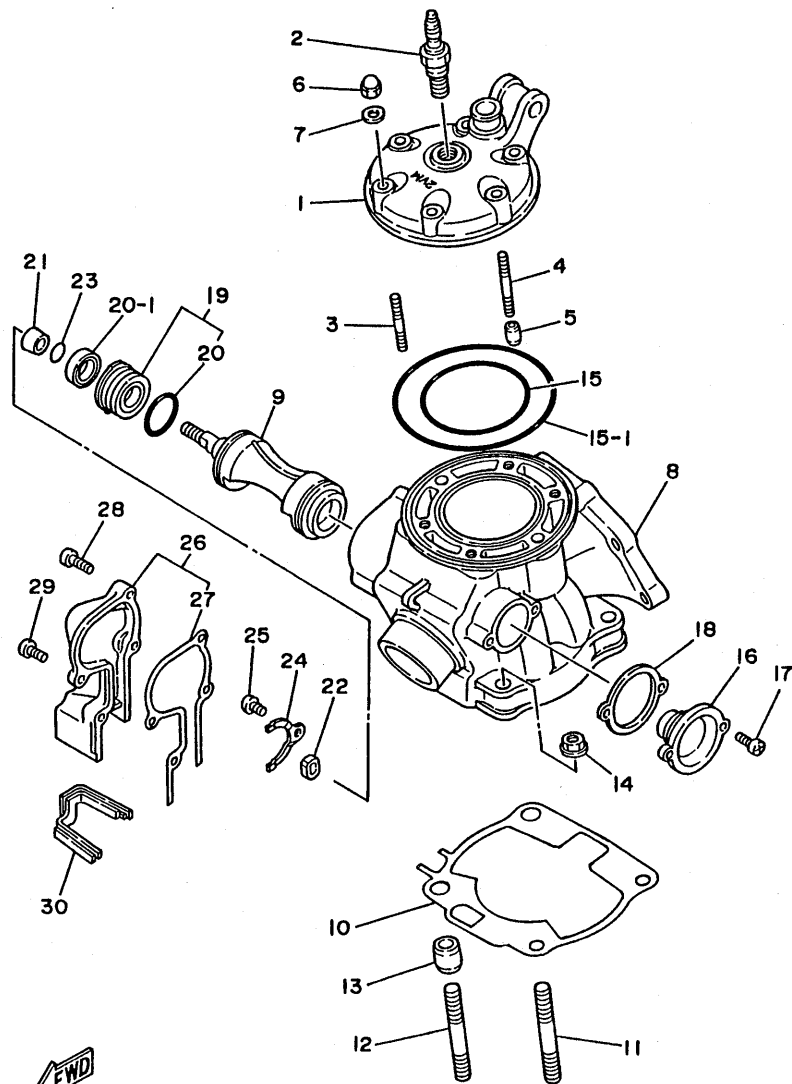
Repair Kit .....	E4
------------------	----

## TABLE OF COMPARISON

TABLE OF COMPARISON .....	E5
---------------------------	----

## INDEX

Numerical Index .....	M1 ~ M3
-----------------------	---------



2VM300-8011

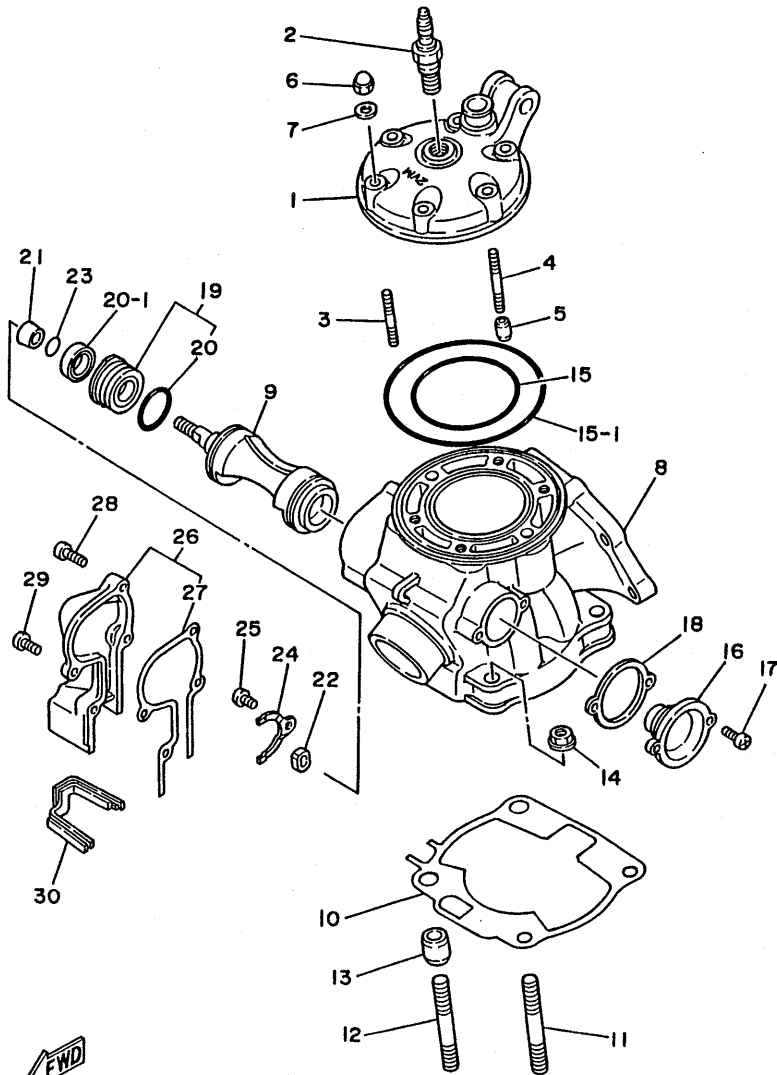


FIG. 1 CYLINDER

REF. NO.	PART NO.	DESCRIPTION	Q'TY	REMARKS
1	2VM-11111-00	HEAD, cylinder 1	1	
* 2	94702-00323	PLUG, spark (NGK B8EG)	1	
3	90116-08394	BOLT, stud	4	
4	90116-08392	BOLT, stud	2	
5	99510-10114	PIN, dowel	2	
6	90176-08026	NUT, crown	6	
7	90201-08087	WASHER, plate	6	
8	2VM-11311-00	CYLINDER 1	1	
9	2VM-1131A-00	VALVE 1	1	
10	2VM-11351-00	GASKET, cylinder	1	
11	90116-10314	BOLT, stud	2	
12	90116-10314	BOLT, stud	2	
13	99530-14016	PIN, dowel	2	
14	95701-10500	NUT, flange	4	
15	93210-77363	O-RING	1	
*15-1	93211-11770	O-RING	1	
16	39W-W1132-00	HOLDER 1	1	
17	98506-05012	SCREW, pan head	2	
18	5X4-1131N-00	GASKET, holder	1	
19	5X4-Y113F-00	HOLDER 2 ASSY	1	
20	93210-27244	O-RING	1	
*20-1	93104-16074	OIL SEAL	1	
21	90387-102F3	COLLAR	1	
22	5X5-11937-00	BOSS, lever	1	
23	93210-09192	O-RING	1	
24	1LX-11915-00	PLATE, thrust 1	1	
25	98506-05010	SCREW, pan head	1	
26	2VM-11992-00	HOUSING 2	1	

FIG. 1 CYLINDER

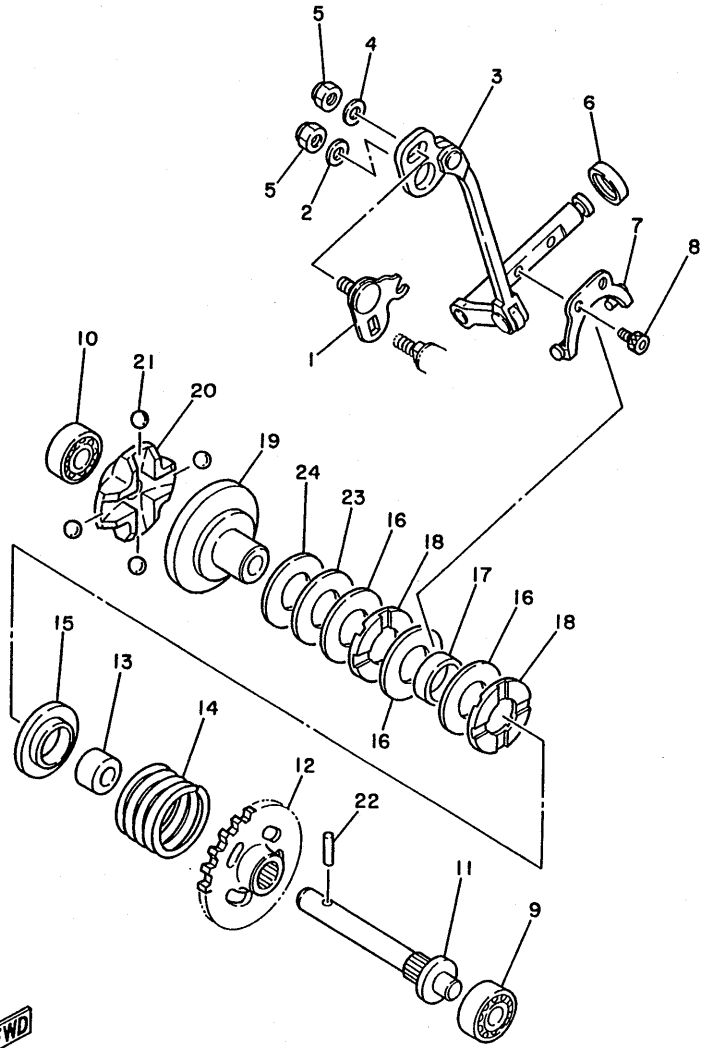
REF. NO.	PART NO.	DESCRIPTION	Q'TY	REMARKS
27	2VM-11993-00	.GASKET	1	
28	98506-05018	SCREW, pan head	3	
29	98506-05014	SCREW, pan head	1	
30	2VM-11995-00	SEAL, housing	1	



2VM300-8011

**B3**

FIG. 2 GOVERNOR



REF. NO.	PART NO.	DESCRIPTION	Q'TY	REMARKS
1	1LX-11931-00	LEVER	1	
2	90201-057K1	WASHER, plate	1	
3	2VM-11990-00	PUSH ROD ASSY	1	
4	92901-05600	WASHER, plate	1	
5	95601-05100	NUT, u	2	
6	93104-08040	OIL SEAL	1	
7	5X5-11922-00	FORK, governor	1	
8	91316-04006	BOLT	2	
9	93300-60814	BEARING (608M4ML01)	1	NMB
10	93300-60814	BEARING (608M4ML01)	1	NMB
11	5X4-11921-02	SHAFT, governor	1	
12	24X-11953-01	GEAR, governor	1	
13	90560-08213	SPACER	1	
14	90501-240F4	SPRING, compression	1	
15	5X4-11952-00	PLATE	1	
16	90201-154E9	WASHER, plate	2	
17	90387-152F2	COLLAR	1	
18	90380-15104	BUSH, solid	2	
19	5X5-11912-01	RETAINER, weight	1	
20	5X5-11911-01	RETAINER	1	
21	93521-64032	BALL	4	
22	93603-14179	PIN, dowel	1	
23	90201-154E9	WASHER, plate	1	UR
	90201-154F5	WASHER, plate (T=0.8)	1	UR
24	90201-154F6	WASHER, plate (T=0.2)	1	UN



2VM100-8020

**B4**

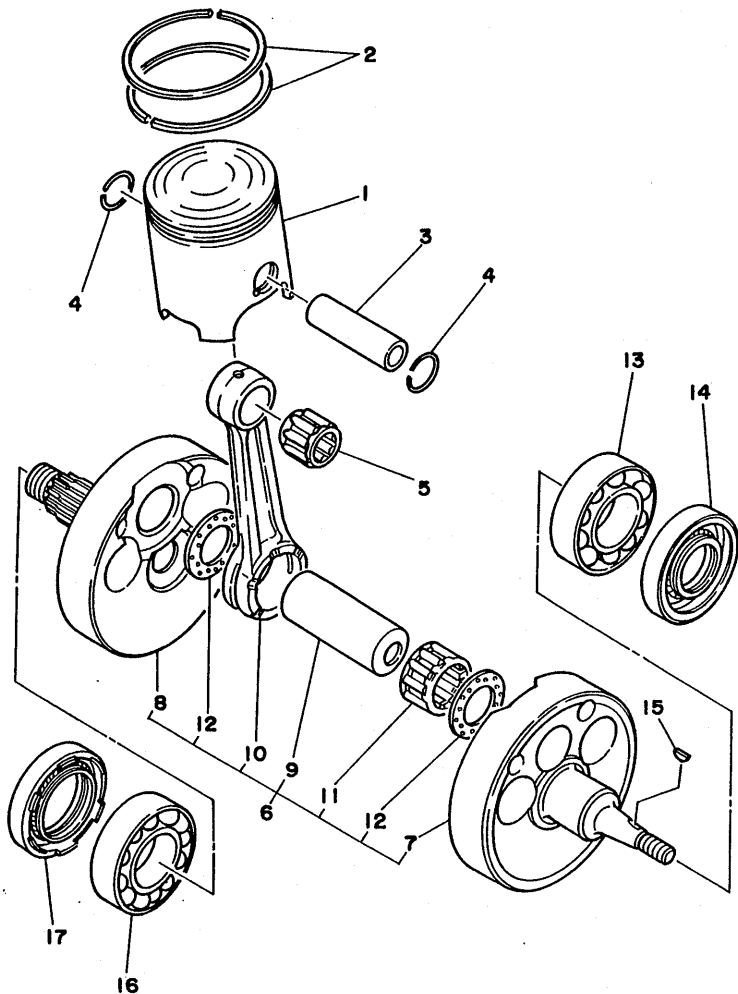


FIG. 3 CRANKSHAFT. PISTON

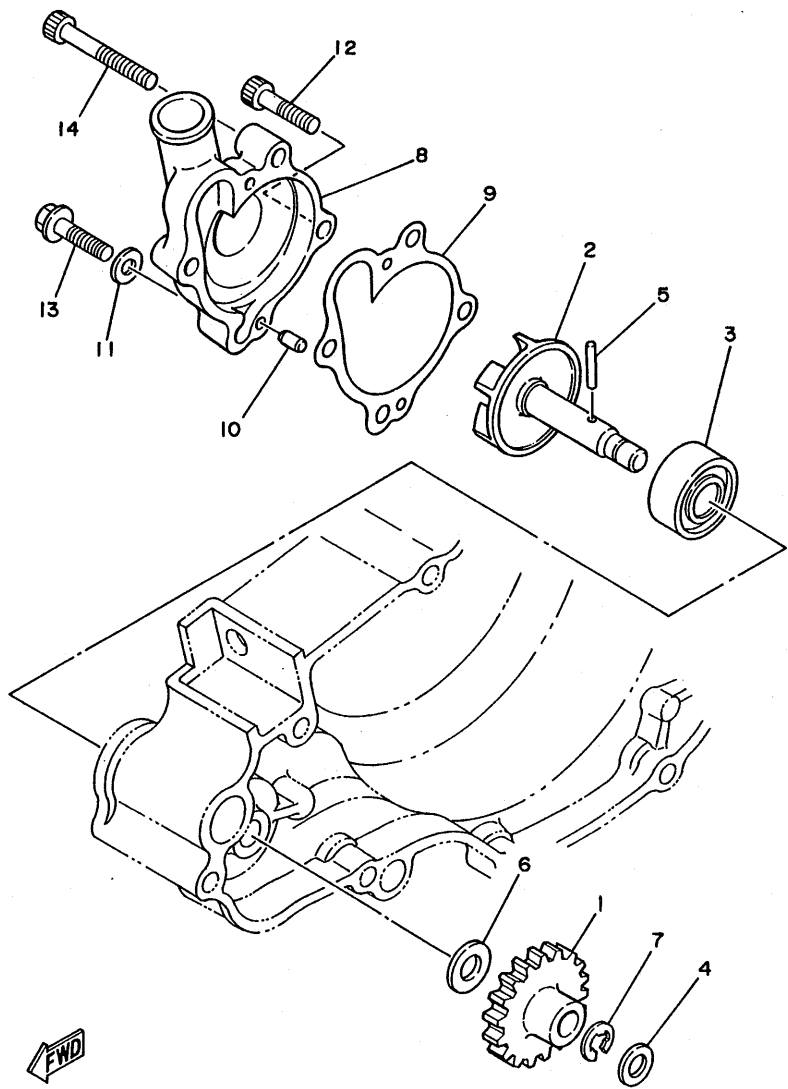
REF. NO.	PART NO.	DESCRIPTION	Q'TY	REMARKS
1	2VM-11631-00-93	PISTON (STD)	1	UR
	2VM-11631-00-94	PISTON (STD)	1	UR
	2VM-11635-00	PISTON (0.25MM O/S)	1	AP
	2VM-11636-00	PISTON (0.50MM O/S)	1	AP
	2VM-11637-00	PISTON (0.75MM O/S)	1	AP
2	56A-11601-00	PISTON RING SET (STD)	1	
	56A-11601-10	PISTON RING SET (1ST O/S)	1	AP
	56A-11601-20	PISTON RING SET (2ND O/S)	1	AP
	56A-11601-30	PISTON RING SET (3RD O/S)	1	AP
3	2VM-11633-00	PIN, piston	1	
4	93450-19052	CIRCLIP	2	
5	93310-418E9	BEARING, cylindrical	1	
6	2VM-11400-00	CRANKSHAFT ASSY	1	
7	2VM-11412-00	.CRANK 1	1	
8	2VM-11422-00	.CRANK 2	1	
9	2X4-11681-00	.PIN, crank 1	1	
10	24Y-11651-01	.ROD, connecting	1	
11	93310-425T1	.BEARING, cylindrical	1	
12	90209-25085	.WASHER	2	
13	93306-37802	BEARING	1	
14	93102-22363	OIL SEAL	1	
15	90280-03045	KEY, woodruff	1	
16	93306-37802	BEARING	1	
17	93103-40091	OIL SEAL	1	

FWD  
2VM100-8030

B5

FIG. 4 WATER PUMP

REF. NO.	PART NO.	DESCRIPTION	Q'TY	REMARKS
1	2VM-12459-00	GEAR, impeller shaft	1	
2	2VM-12450-00	IMPELLER SHAFT ASSY	1	
3	93103-10147	OIL SEAL	1	
4	90201-08759	WASHER, plate	1	
5	93603-22028	PIN, dowel	1	
6	90201-08784	WASHER, plate	1	
7	99009-06600	CIRCLIP	1	
8	2VM-12422-00	COVER, housing	1	
9	2VM-12428-00	GASKET, housing cover 2	1	
10	93604-10011	PIN, dowel	2	
11	90430-06166	GASKET	1	
12	91316-06025	BOLT	2	
13	95816-06025	BOLT, flange	1	
14	91316-06065	BOLT	1	



2VM100-8040

**B6**

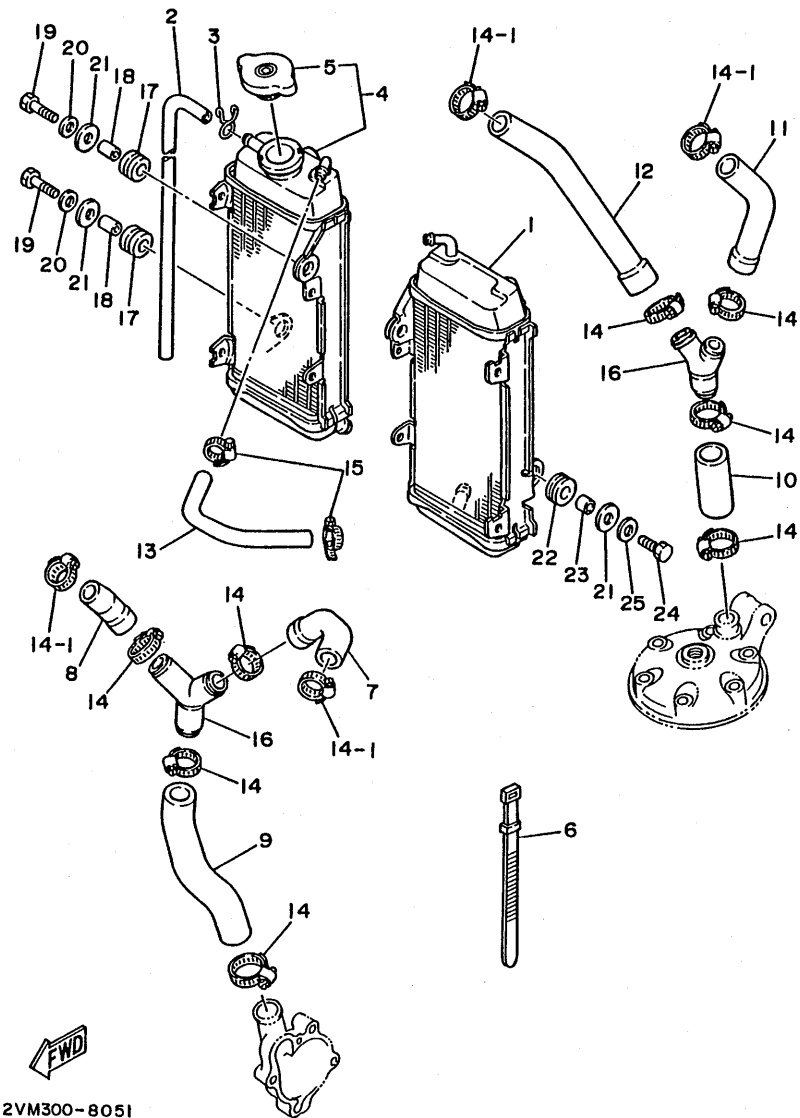
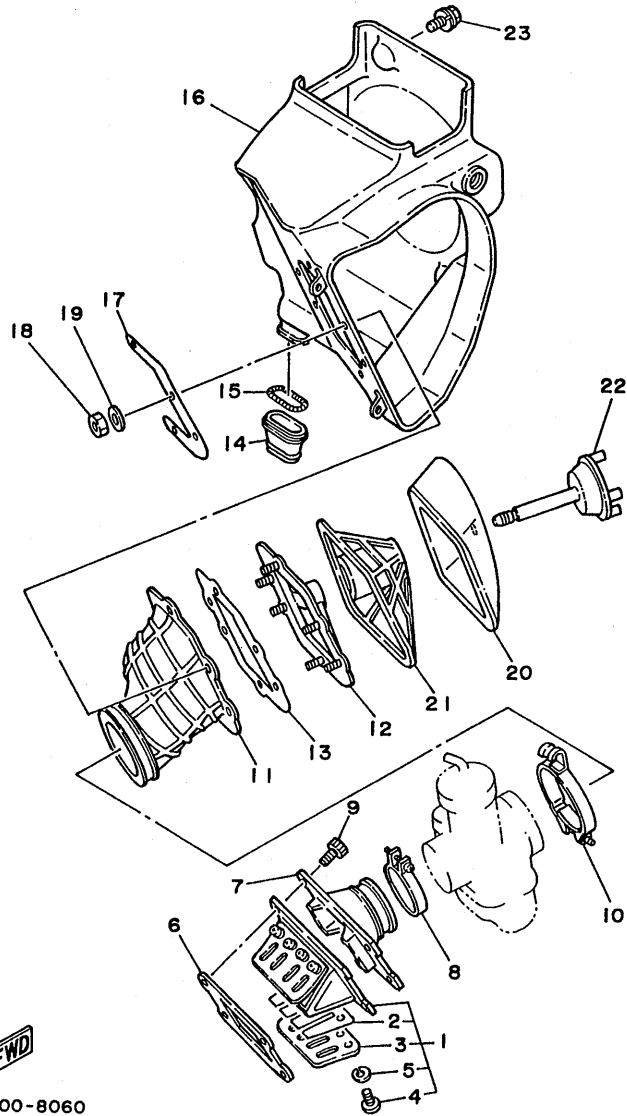


FIG. 5 RADIATOR. HOSE

REF. NO.	PART NO.	DESCRIPTION	Q'TY	REMARKS
1	2VM-12460-00	RADIATOR ASSY	1	
2	90446-09079	HOSE	1	
3	90467-09006	CLIP	1	
4	1LU-1240A-00	RADIATOR ASSY 2	1	
5	22W-12462-00	.CAP, radiator	1	
6	437-83936-10	BAND, switch cord	1	
7	2VM-12481-00	PIPE 1	1	
8	2VM-12482-00	PIPE 2	1	
9	2VM-12483-00	PIPE 3	1	
10	39X-12485-00	PIPE 5	1	
11	2VM-12476-00	PIPE 6	1	
12	2VM-12477-00	PIPE 7	1	
13	1LU-1248A-00	PIPE 8	1	
*14	90450-28014	HOSE CLAMP ASSY	8	
*14-1	90450-22017	HOSE CLAMP ASSY	4	
15	90460-12268	CLAMP, hose	2	
16	24X-12469-00	JOINT 1	2	
17	90480-15064	GROMMET	2	
18	90387-07392	COLLAR	2	
19	97001-06030	BOLT	2	
20	92901-06600	WASHER, plate	2	
21	90201-06570	WASHER, plate	4	
22	90480-18276	GROMMET	2	
23	90387-07573	COLLAR	2	
24	97001-06020	BOLT	2	
25	92901-06600	WASHER, plate	2	

2VM300-8051

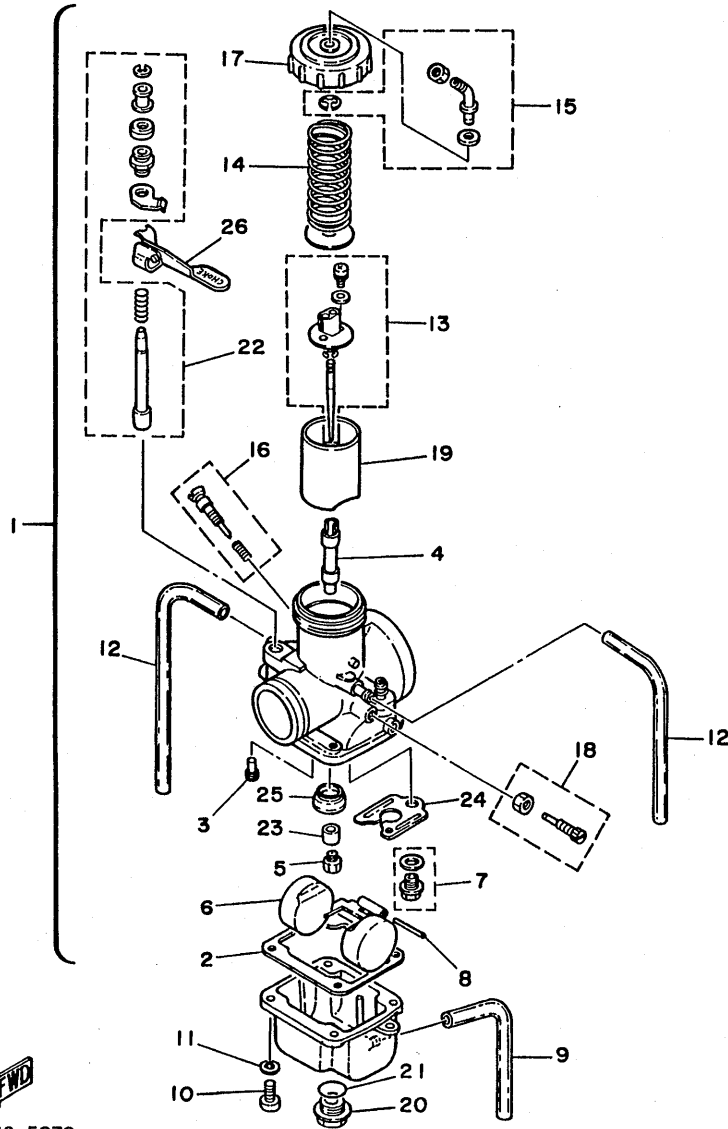
FIG. 6 INTAKE



REF. NO.	PART NO.	DESCRIPTION	Q'TY	REMARKS
1	56A-13610-01	REED VALVE ASSY	1	
2	56A-13613-00	.REED, valve	2	
3	56A-13616-00	.STOPPER, reed valve	2	
4	98580-03006	.SCREW, pan head	8	
5	92990-03100	.WASHER, spring	8	
6	39X-13621-01	GASKET, valve seat	1	
7	2VM-13565-00	JOINT, carburetor	1	
8	90460-51109	CLAMP, hose	1	
9	95026-06020	BOLT, flange	6	
10	90460-68199	CLAMP, hose	1	
11	2VM-14453-00	JOINT, air cleaner 1	1	
12	55Y-14459-01	HOLDER, guide	1	
13	39W-14462-00	SEAL	1	
14	39K-14457-00	SEAL	1	
15	90504-03033	SPRING, compression	1	
16	2VM-W1441-00	AIR CLEANER CASE COMP.	1	
17	2VM-14477-00	PLATE	1	
18	95601-05100	NUT, u	6	
19	92990-05200	WASHER, plain	2	
20	2VM-14451-00	ELEMENT, air cleaner	1	
21	2VM-14458-00	GUIDE	1	
22	2VM-14468-00	PLATE, element fitting	1	
23	90119-06081	BOLT, with washer	3	

FWD  
2VM100-8060

FIG. 7 CARBURETOR



REF. NO.	PART NO.	DESCRIPTION	Q'TY	REMARKS
1	2VM-14101-10	CARBURETOR ASSY 1	1	
2	363-14184-00	.GASKET, float chamber	1	
3	193-14142-45	.JET, pilot (# 45)	1	STD
	193-14142-40	.JET, pilot (# 40)	1	AP
	193-14142-50	.JET, pilot (# 50)	1	AP
4	510-14141-R4	.NOZZLE, main	1	STD
	510-14141-R2	.NOZZLE, main	1	AP
	510-14141-R6	.NOZZLE, main	1	AP
5	137-14143-78	.JET, main (#390)	1	STD
	137-14143-76	.JET, main (#380)	1	AP
	137-14143-80	.JET, main (#400)	1	AP
6	2N7-14185-00	.FLOAT	1	
7	23X-14107-35	.NEEDLE VALVE SET	1	
8	537-14186-00	.PIN, float	1	
9	2K7-14197-00	.PIPE	1	
10	98501-05016	.SCREW, pan head	4	
11	92990-05100	.WASHER, spring	4	
12	310-14197-00	.PIPE	2	
13	2VM-1490J-00	.NEEDLE SET	1	
14	431-14131-00	.SPRING, throttle valve	1	
15	23X-14106-00	.CABLE ADJUST SCREW SET	1	
16	23X-14104-00	.AIR SCREW SET	1	
17	5Y9-14158-00	.TOP, mixing chamber	1	
18	23X-14103-00	.THROTTLE SCREW SET	1	
19	2X8-14112-30	.VALVE, throttle 1	1	STD
	2X8-14112-25	.VALVE, throttle 1	1	AP
	2X8-14112-35	.VALVE, throttle 1	1	AP
20	510-14115-00	.PLUG, screw	1	



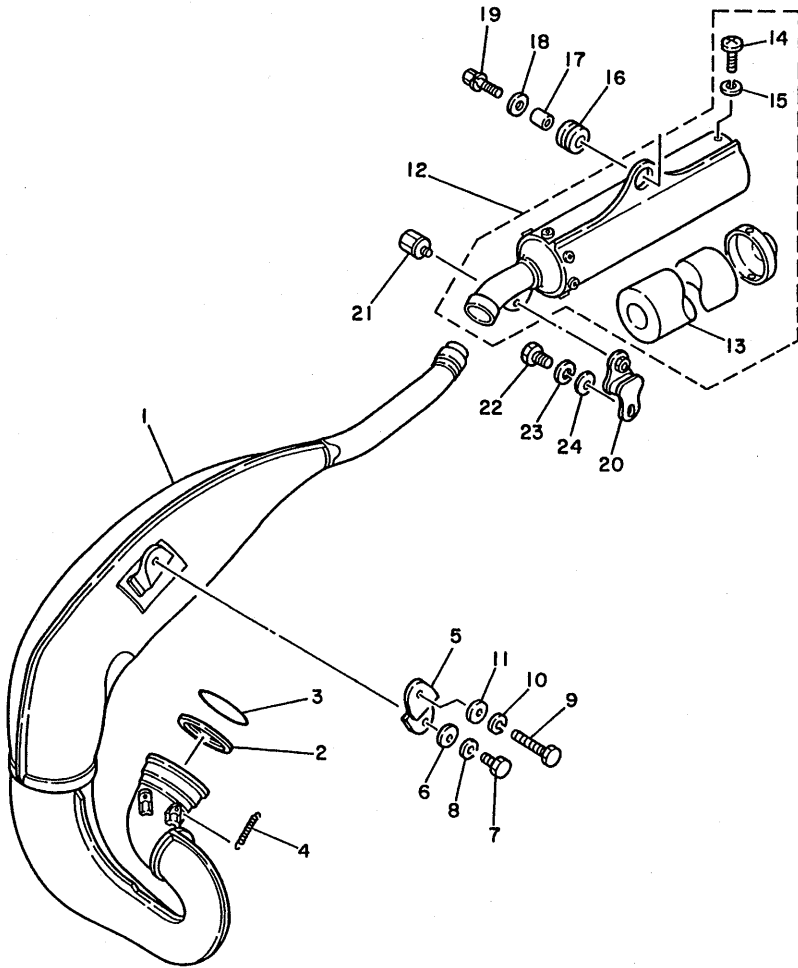
56A110-5070

B9



FIG. 8 EXHAUST

REF. NO.	PART NO.	DESCRIPTION	Q'TY	REMARKS
1	2VM-14610-00	EXHAUST PIPE ASSY 1	1	
2	3R4-14613-00	GASKET, exhaust pipe	1	
3	93210-56743	O-RING	1	
4	90507-20030	SPRING, tension	3	
5	24Y-14771-00	STAY, muffler 1	1	
6	90201-08730	WASHER, plate	1	
7	97313-08016	BOLT	1	
8	92990-08100	WASHER, spring	1	
9	97001-08060	BOLT	1	
10	92990-08100	WASHER, spring	1	
11	92901-08600	WASHER, plate	1	
12	2VM-14753-00	SILENCER, exhaust	1	
13	2HH-1469A-10	.FIBER	1	
14	92501-06010	.SCREW, pan head	2	
15	92990-06100	.WASHER, spring	2	
16	39X-14747-00	DAMPER, muffler	1	
17	90387-081A3	COLLAR	1	
18	90201-08612	WASHER, plate	1	
19	90109-08512	BOLT	1	
20	565-14771-00	STAY, muffler 1	1	
21	90109-06551	BOLT	1	
22	97313-06016	BOLT	1	
23	92990-06100	WASHER, spring	1	
24	92901-06600	WASHER, plate	1	



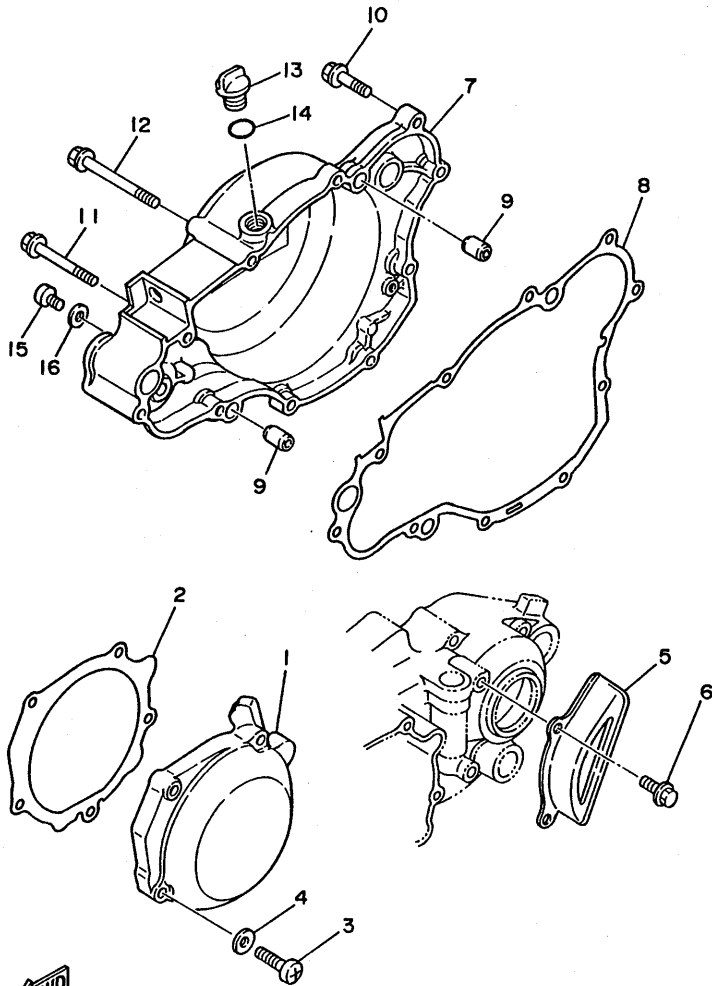
2VM100-8080

**B11**



FIG. 10 CRANKCASE COVER 1

REF. NO.	PART NO.	DESCRIPTION	Q'TY	REMARKS
1	2VM-15411-00	COVER, crankcase 1	1	
2	2VM-15451-00	GASKET, crankcase cover 1	1	
3	92516-06030	SCREW, pan head	5	
4	92906-06600	WASHER, plate	5	
5	2VM-15421-00	COVER, crankcase 2	1	
6	95026-06012	BOLT, flange	2	
7	2VM-Y1543-00	COVER, crankcase 3	1	
8	2VM-15462-00	GASKET, crankcase cover 3	1	
9	99510-12016	PIN, dowel	2	
10	91316-06025	BOLT	7	
11	91316-06055	BOLT	1	
12	91316-06070	BOLT	1	
13	1G8-15362-00	PLUG, oil level	1	
14	93210-14104	O-RING	1	
15	92506-06008	SCREW, pan head	1	
16	90430-06016	GASKET	1	

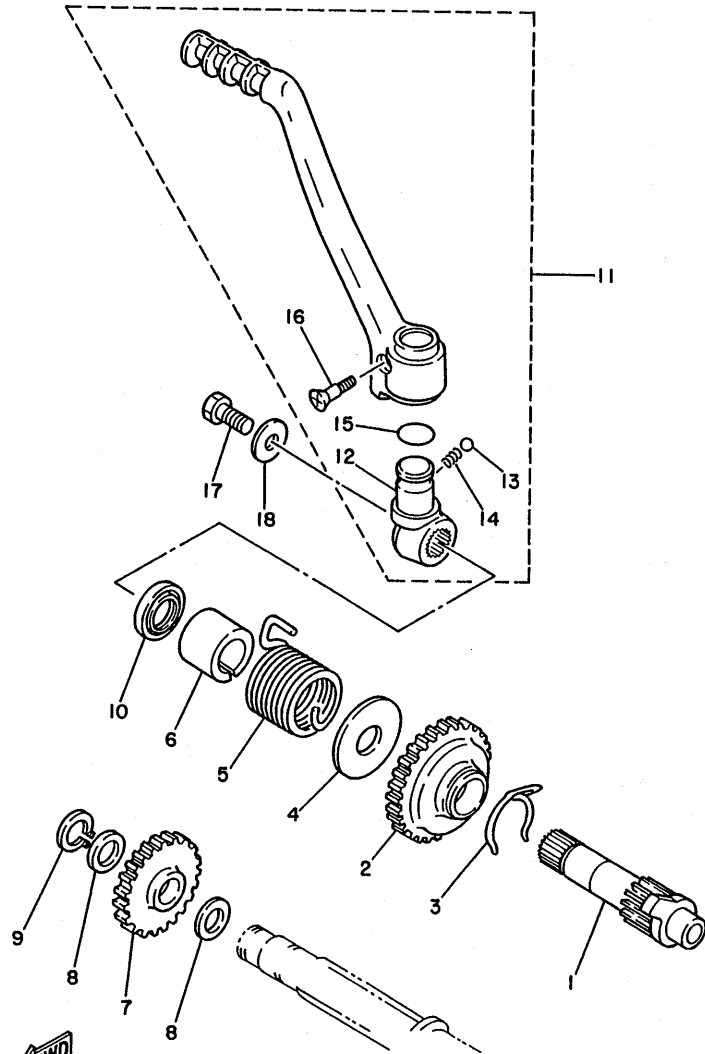


2VM100-8100

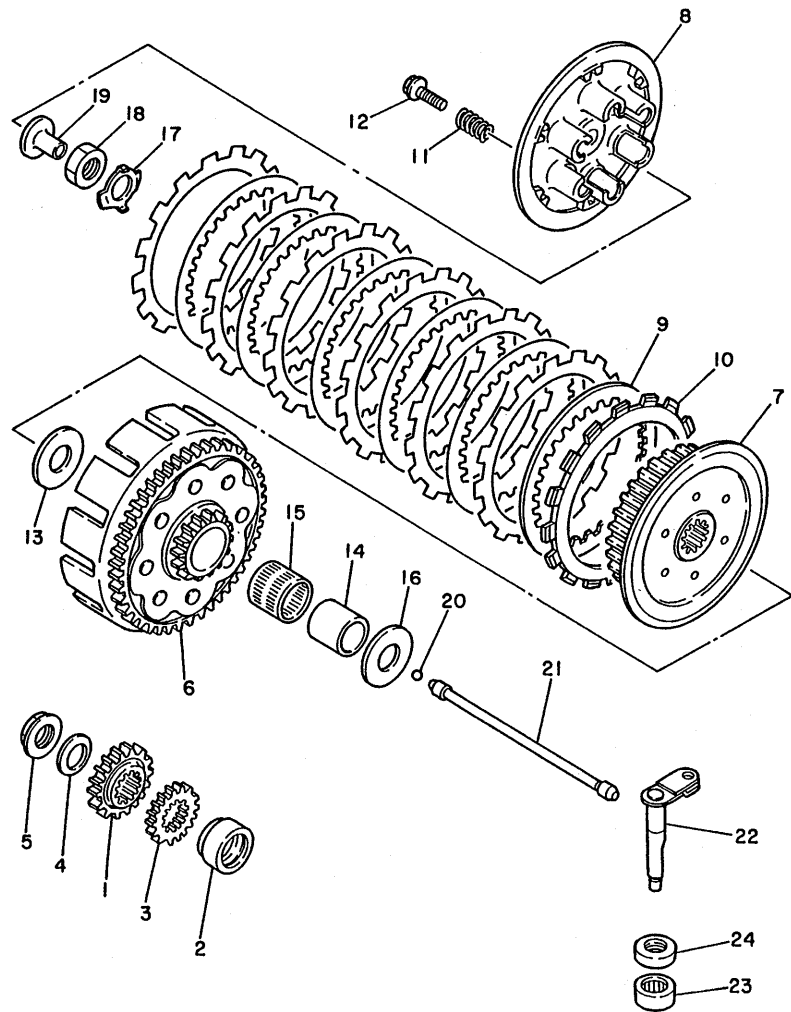
**B13**

FIG. 11 STARTER

REF. NO.	PART NO.	DESCRIPTION	Q'TY	REMARKS
1	2VM-15661-00	AXLE, kick	1	
2	3R4-15641-00	GEAR, kick (26T)	1	
3	90468-26048	CLIP	1	
4	90201-20358	WASHER, plate	1	
5	90508-30743	SPRING, torsion	1	
6	2VM-15664-00	GUIDE, spring	1	
7	38V-15651-00	GEAR, kick idle (23T)	1	
8	90201-17545	WASHER, plate	2	
9	99009-17400	CIRCLIP	1	
10	93102-20309	OIL SEAL	1	
11	2VM-15620-00	KICK CRANK ASSY	1	
12	23X-15621-01	.BOSS, kick crank	1	
13	93501-04011	.BALL	1	
14	90501-13720	.SPRING, compression	1	
15	93210-19216	.O-RING	1	
16	90152-06010	.SCREW, countersunk	1	
17	92016-08020	SCREW	1	
18	90201-087A9	WASHER, plate	1	



2VM100-8110



2VM100-8120

FIG. 12 CLUTCH

REF. NO.	PART NO.	DESCRIPTION	Q'TY	REMARKS
1	2VM-16111-00	GEAR, primary drive	1	
2	90387-252F6	COLLAR	1	
3	2VM-11956-00	GEAR, drive	1	
4	90208-18025	WASHER, conical spring	1	
5	90179-18172	NUT	1	
6	2VM-16150-00	PRIMARY DRIVEN GEAR COMP.	1	
7	2VM-16371-00	BOSS, clutch	1	
8	2VM-16351-00	PLATE, pressure 1	1	
9	4X7-16325-00	PLATE, clutch 2	6	
10	22U-16321-00	PLATE, friction	7	
11	90501-23598	SPRING, compression	6	
12	90159-06016	SCREW, with washer	6	
13	2K7-16154-00	PLATE, thrust 1	1	
14	2VM-16181-00	SPACER 1	1	
15	93310-230T7	BEARING, cylindrical	1	
16	2K7-16154-00	PLATE, thrust 1	1	
17	90215-20231	WASHER, lock	1	
18	90170-20255	NUT	1	
19	2VM-16356-00	ROD, push 1	1	
20	93511-32027	BALL	1	
21	2VM-16357-00	ROD, push 2	1	
22	2VM-16381-00	PUSH LEVER COMP.	1	
23	93315-11206	BEARING, cylindrical	1	
24	93102-12224	OIL SEAL	1	

# PARTS NEWS

News No. PE0-MC-080017

Date: Mar., 13., 2008

Signature: K.Otsuka

Cause  Revision Notice  Correction  Sales Unit Change  Others

Model	YZ250U(2VM) / YZ250'88(2VM)	
Subject	PARTS CATALOGUE CORRECTIONS	
CATALOGUE NO.	182VM-100E2 / 182VM-300E2	
Time of YPEC Revision	Text, Illustration --> Mar./28/2008	PDF Replace --> Mar./28/2008
(YPEC = Yamaha Parts Electrical Catalogue = Website parts catalogue)		

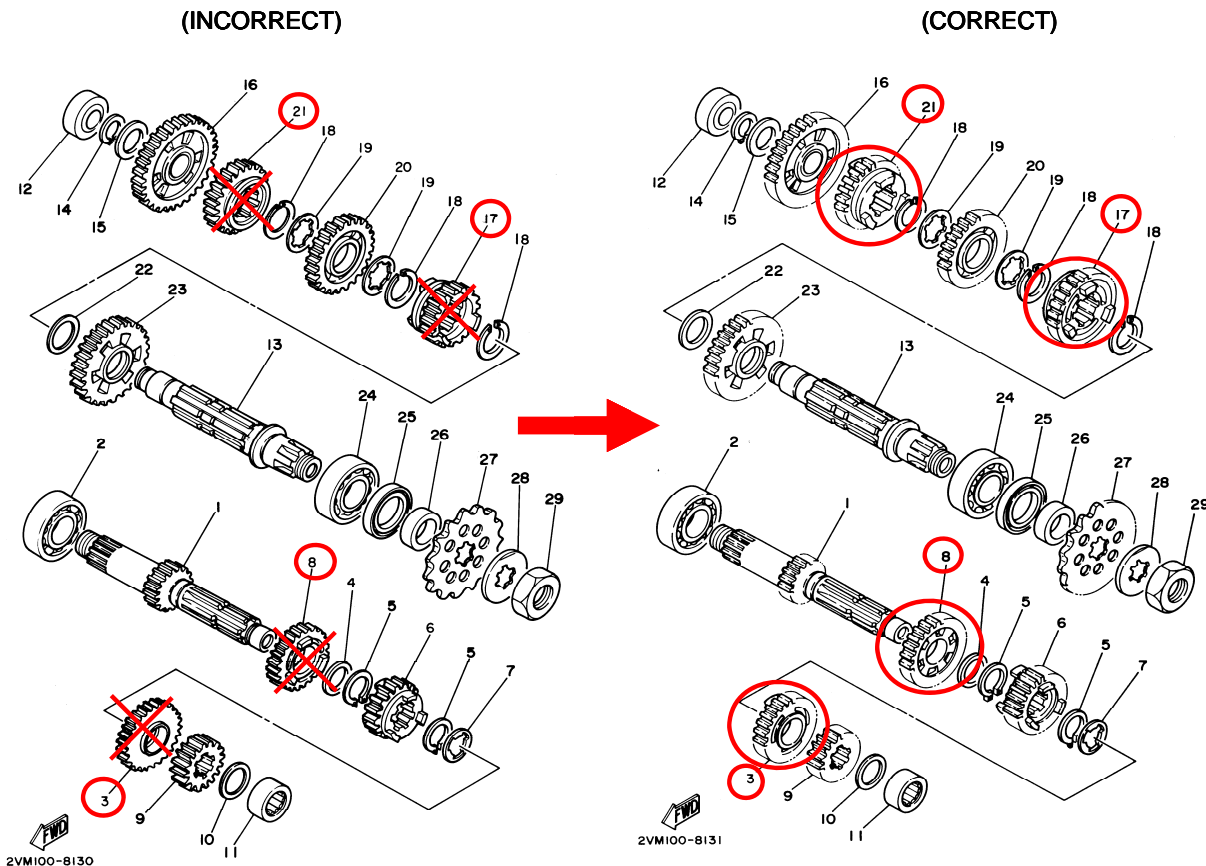
## FIG. 13 TRANSMISSION SECTION

### 1. LIST CORRECTION

REF.NO.	PART NO.	DESCRIPTION	Q'TY	REMARKS
3	2VM-17141-00	GEAR, 4TH PINION (19T)	1	<b>*ILLUSTRATION CORRECTION</b>
8	2VM-17151-00	GEAR, 5TH PINION (23T)	1	
17	2VM-17241-00	GEAR, 4TH WHEEL (22T)	1	
21	2VM-17251-00	GEAR, 5TH WHEEL (23T)	1	

\* These changes are applied from initial production.

### 2. ILLUSTRATION CORRECTION



Thank you very much for your cooperatio

Parts  
Manager  
Check

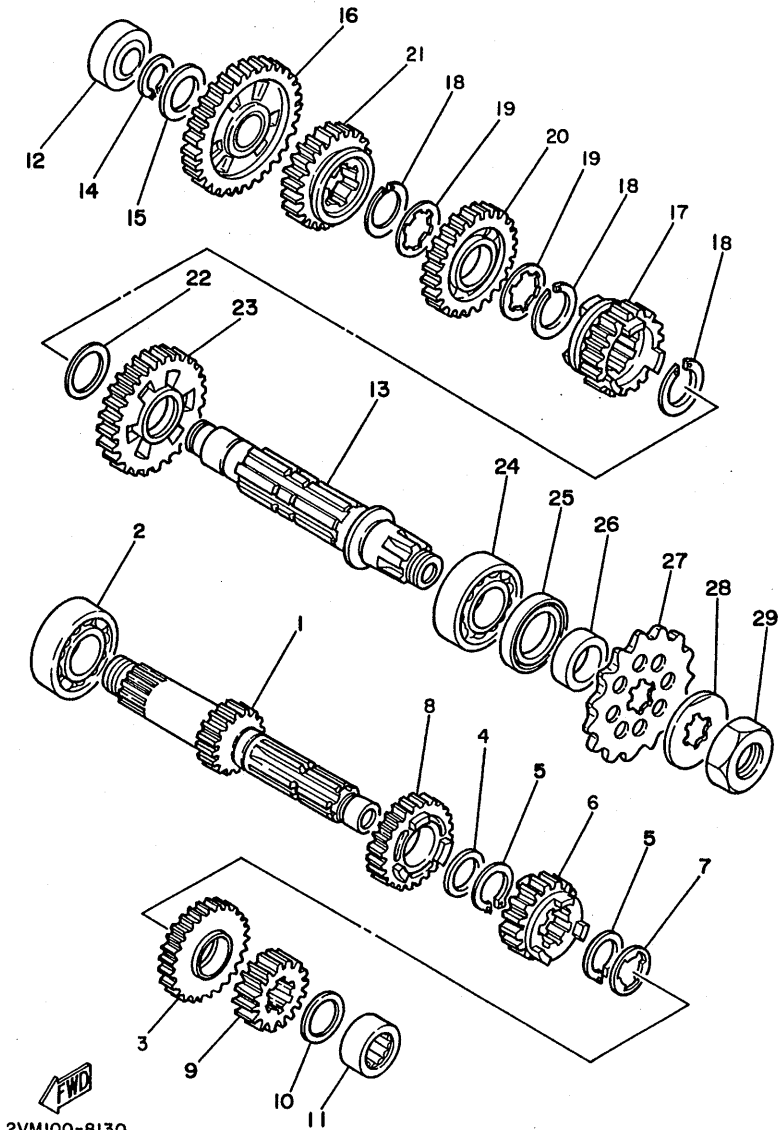
Service  
Manager  
Check

Parts  
Manager  
File

YAMAHA MOTOR CO.,LTD  
2500 Shingai Iwata Shizuoka 438-8501 Japan  
Technical Publication Dept.

FIG. 13 TRANSMISSION

REF. NO.	PART NO.	DESCRIPTION	Q'TY	REMARKS
1	2VM-17411-00	AXLE, main (15T)	1	
2	93300-20501	BEARING (TM205C3)	1	
* 3	2VM-17141-00	GEAR, 4th pinion (19T)	1	
4	90201-22555	WASHER, plate	1	
5	93410-22039	CIRCLIP	2	
6	2VM-17131-00	GEAR, 3rd pinion (16T)	1	
7	90209-18135	WASHER	1	
* 8	2VM-17151-00	GEAR, 5th pinion (23T)	1	
9	2VM-17121-00	GEAR, 2nd pinion (17T)	1	
10	90209-17235	WASHER	1	
11	93311-41734	BEARING, cylindrical	1	
12	93311-62035	BEARING, cylindrical	1	
13	2VM-17421-00	AXLE, drive	1	
14	93410-20038	CIRCLIP	1	
15	90201-20278	WASHER, plate	1	
16	2VM-17211-00	GEAR, 1st wheel (31T)	1	
*17	2VM-17241-00	GEAR, 4th wheel (22T)	1	
18	93440-25084	CIRCLIP	3	
19	90209-22082	WASHER	2	
20	2VM-17231-00	GEAR, 3rd wheel (22T)	1	
*21	2VM-17251-00	GEAR, 5th wheel (23T)	1	
22	90201-253K0	WASHER, plate	1	
23	2VM-17221-00	GEAR, 2nd wheel (29T)	1	
24	93306-20574	BEARING	1	
25	93102-32337	OIL SEAL	1	
26	90387-25663	COLLAR	1	
27	93834-14050	SPROCKET, drive 14T (23X1746140)	1	STD
	93834-13030	SPROCKET, drive 13T (23X1746130)	1	AP

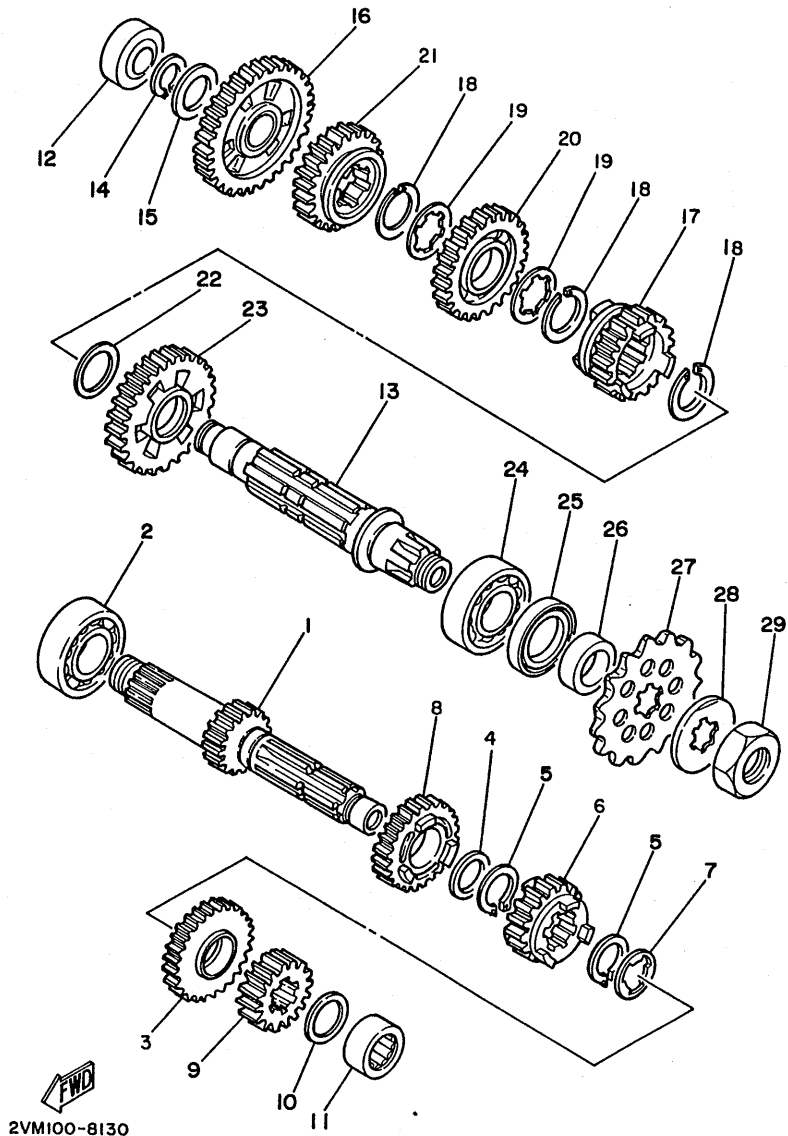


2VM100-8130

C2

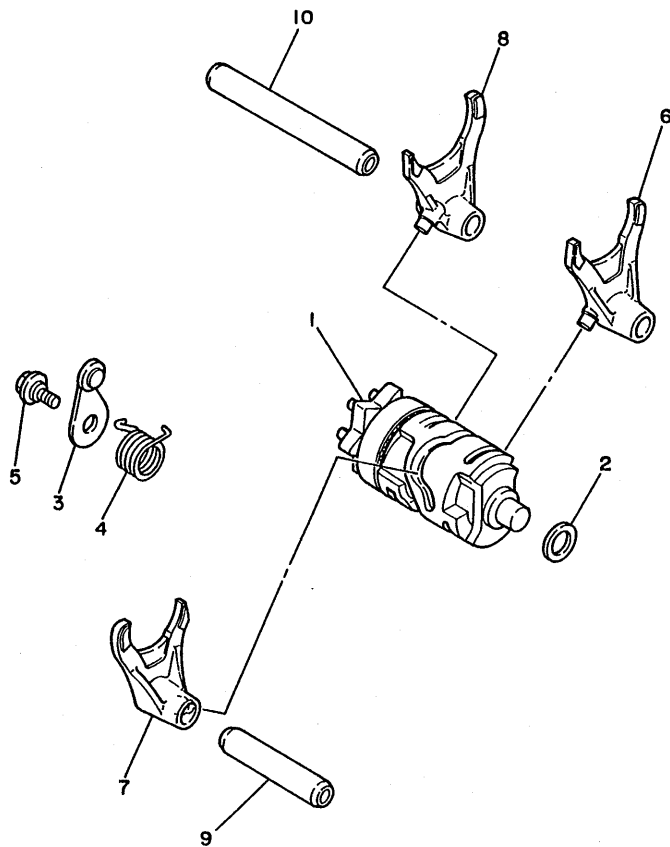
FIG. 13 TRANSMISSION

REF. NO.	PART NO.	DESCRIPTION	Q'TY	REMARKS
27	93834-15076	SPROCKET, drive 15T (23X1746150)	1	AP
28	90215-21239	WASHER, lock	1	
29	90179-20255	NUT	1	



C3

FIG. 14 SHIFT CAM. FORK



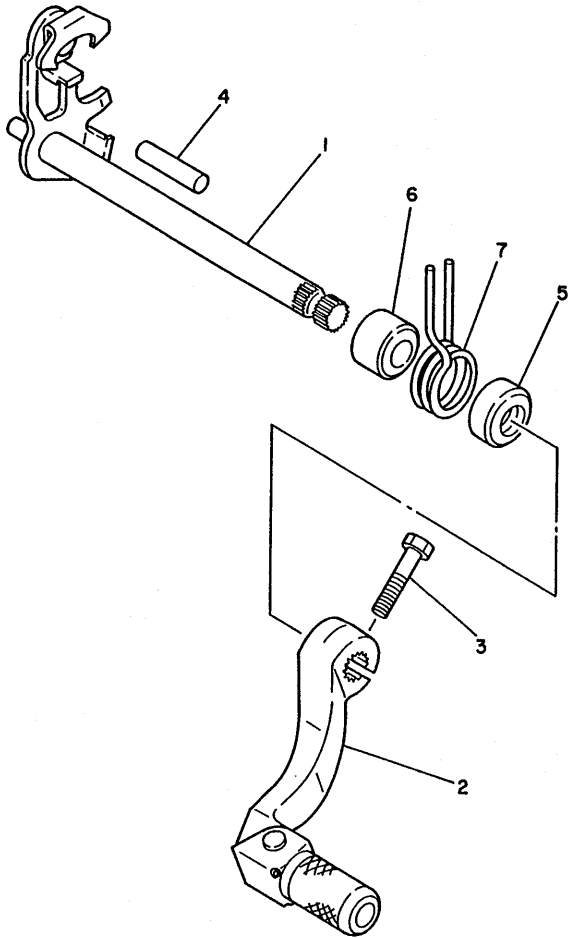
REF. NO.	PART NO.	DESCRIPTION	Q'TY	REMARKS
1	2VM-18540-00	SHIFT CAM ASSY	1	
2	90201-12166	WASHER, plate	1	
3	22W-18140-00	STOPPER LEVER ASSY	1	
4	90508-26561	SPRING, torsion	1	
5	50W-21631-00	BOLT 1	1	
6	2VM-18511-00	FORK, shift 1	1	
7	2VM-18512-00	FORK, shift 2	1	
8	2VM-18513-00	FORK, shift 3	1	
9	1LX-18531-00	BAR, shift fork guide 1	1	
10	34K-18535-00	BAR, shift fork guide 2	1	



2VM100-8140

FIG. 15 SHIFTER

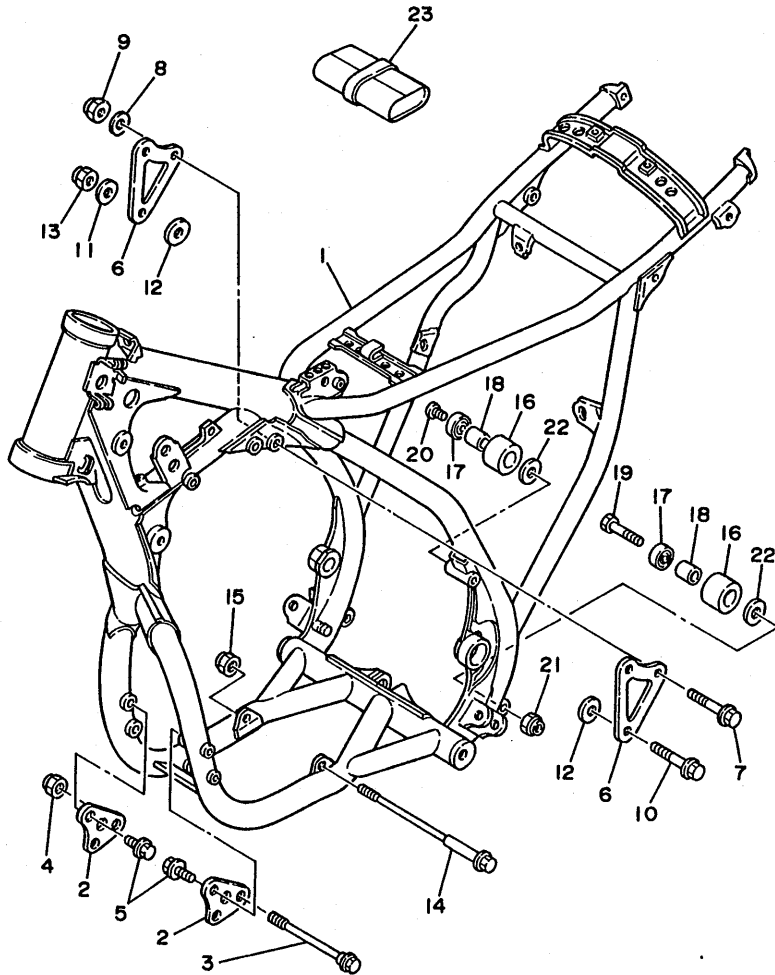
REF. NO.	PART NO.	DESCRIPTION	Q'TY	REMARKS
1	2VM-18101-00	SHIFT SHAFT ASSY	1	
2	2VM-18110-00	SHIFT PEDAL ASSY	1	
3	98021-06025	BOLT	1	
4	93608-25150	PIN, dowel	1	
5	93102-12106	OIL SEAL	1	
6	90560-12171	SPACER	1	
7	90508-29742	SPRING, torsion	1	



2VM100-8150

C5

FIG. 16 FRAME

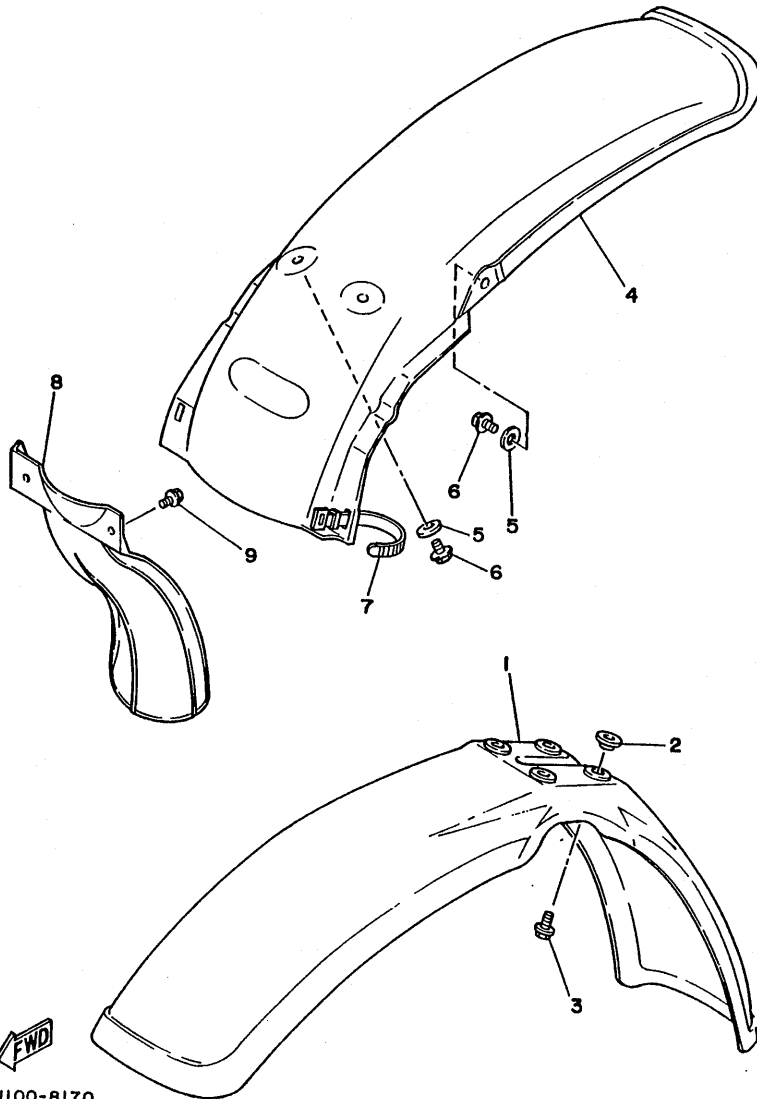


REF. NO.	PART NO.	DESCRIPTION	Q'TY	REMARKS
1	2VM-21110-00-UJ	FRAME COMP.	1	RADICAL WHITE
2	24Y-21415-00	BRACKET, front upper 1	2	
3	90105-08498	BOLT, washer based	1	
4	95611-08200	NUT, self-locking	1	
5	91011-08040	BOLT, flange	4	
6	2VM-21425-00	BRACKET, rear upper 1	2	
7	91011-08055	BOLT, flange	2	
8	90202-08022	WASHER, plate	2	
9	95601-08200	NUT, self-locking	2	
10	91011-10055	BOLT, flange	1	
11	92990-10200	WASHER, plain	1	
12	90201-101J1	WASHER, plate	2	
13	95601-10200	NUT, self-locking	1	
14	91011-10120	BOLT, flange	1	
15	95611-10200	NUT, self-locking	1	
16	2HH-22178-00	TENSIONER	2	
17	93300-60816	BEARING	2	
18	90387-086N4	COLLAR	2	
19	95023-08045	BOLT, flange	1	
20	92011-08060	SCREW	1	
21	95602-08200	NUT, self-locking	2	
22	90201-081A6	WASHER, plate	3	
23	1LU-28100-00	TOOL KIT	1	

2VM100-8160

FIG. 17 FENDER

REF. NO.	PART NO.	DESCRIPTION	Q'TY	REMARKS
* 1	5X6-21511-11	FENDER, front	1	WHITE
2	90387-06681	COLLAR	4	
3	90119-06063	BOLT, with washer	4	
4	1LX-21611-00	FENDER, rear	1	WHITE
5	90201-06571	WASHER, plate	4	
6	90105-06138	BOLT, washer based	4	
7	437-83936-00	BAND, switch cord	1	
8	39X-21642-00	GUARD, flap	1	
9	90119-06042	BOLT, with washer	2	

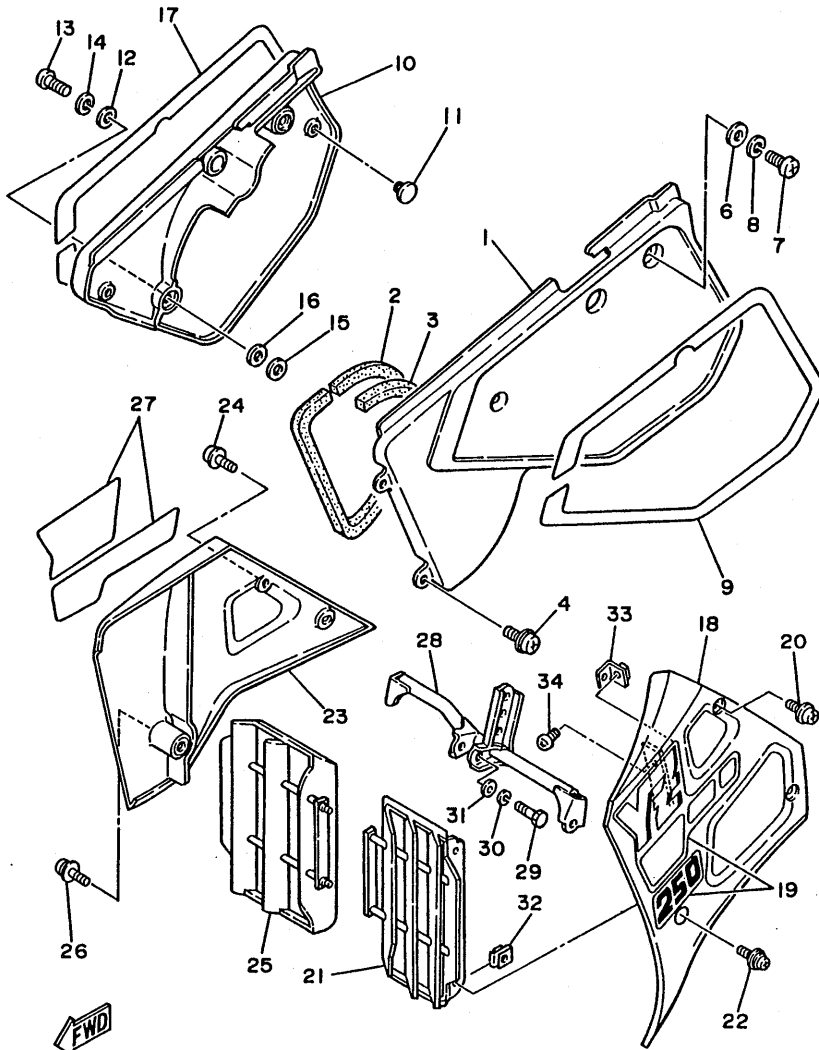


2VN100-8170

C7

FIG. 18 SIDE COVER

REF. NO.	PART NO.	DESCRIPTION	Q'TY	REMARKS
1	2VM-21711-00-98	COVER, side 1	1	LOW GLOSS BLACK
2	39W-14452-00	SEAL	1	
3	39X-14452-00	SEAL	1	
* 4	90159-06042	SCREW, with washer	3	
*				
6	90201-06571	WASHER, plate	1	
7	92501-06014	SCREW, pan head	1	
8	92990-06100	WASHER, spring	1	
9	2VM-2173L-00	GRAPHIC SET 1	1	
10	2VM-21721-00	COVER, side 2	1	
11	22W-24181-00	DAMPER, locating 1	2	
12	90201-06571	WASHER, plate	2	
13	92501-06014	SCREW, pan head	2	
14	92990-06100	WASHER, spring	2	
15	90201-063A5	WASHER, plate	1	
16	92901-08200	WASHER, plain	2	
17	2VM-2174L-00	GRAPHIC SET 2	1	
18	2VM-21731-00	COVER, side 3	1	
19	2VM-24240-00	GRAPHIC SET	1	
20	90159-06013	SCREW, with washer	2	
21	24Y-2172A-00	PANEL 1	1	
22	90159-05100	SCREW, with washer	2	
23	2VM-21741-00	COVER, side 4	1	
24	90159-06013	SCREW, with washer	2	
25	24Y-2172A-00	PANEL 1	1	
26	90159-05100	SCREW, with washer	2	
27	2VM-24250-00	GRAPHIC SET	1	
28	2VM-2174F-00	GUARD, radiator	1	

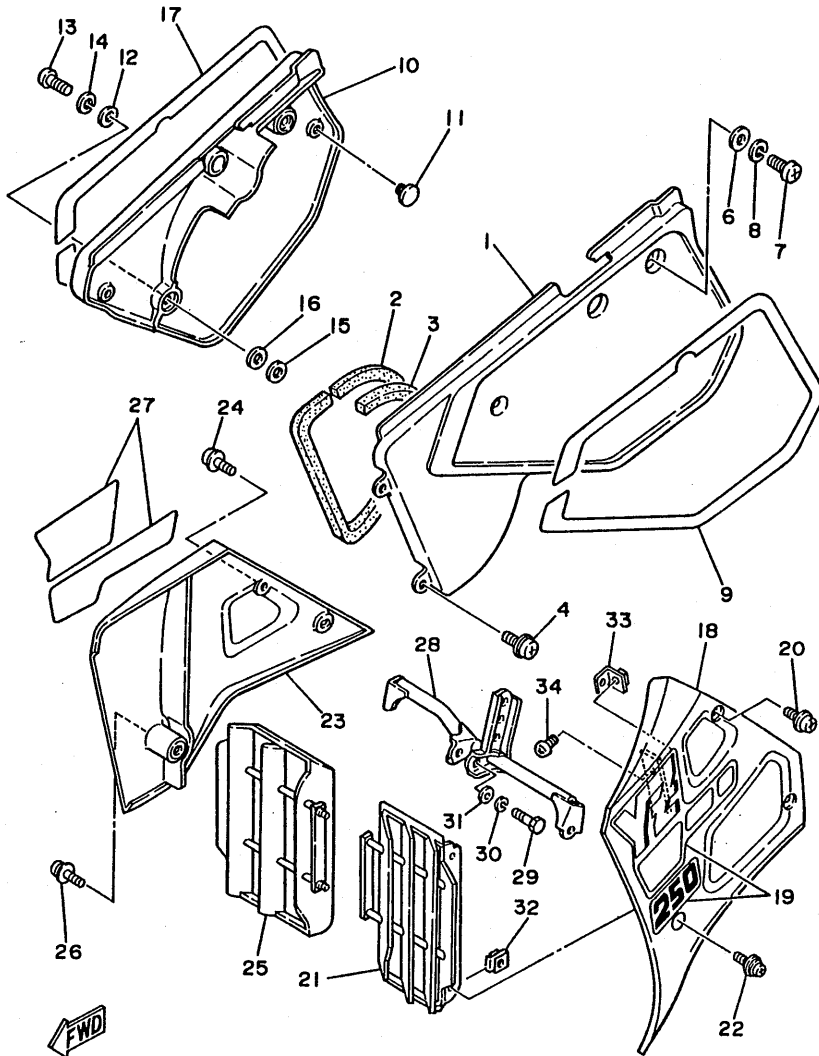


2VM300-8181

C8

FIG. 18 SIDE COVER

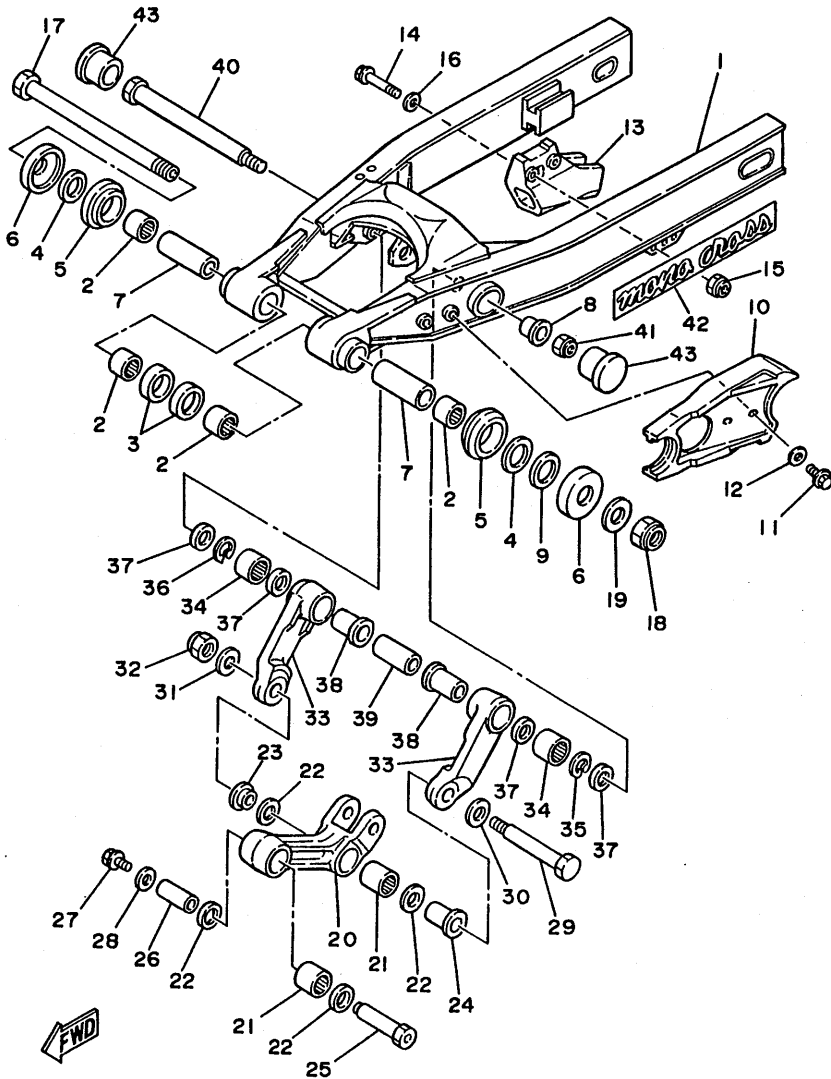
REF. NO.	PART NO.	DESCRIPTION	Q'TY	REMARKS
29	97001-08050	BOLT	1	
30	92990-08100	WASHER, spring	1	
31	92901-08600	WASHER, plate	1	
32	22W-21791-00	NUT	4	
*33	2VM-2172K-00	BRACKET 1	1	
*34	98501-05012	SCREW, pan head	1	



2VM300-8181

FIG. 19 REAR ARM

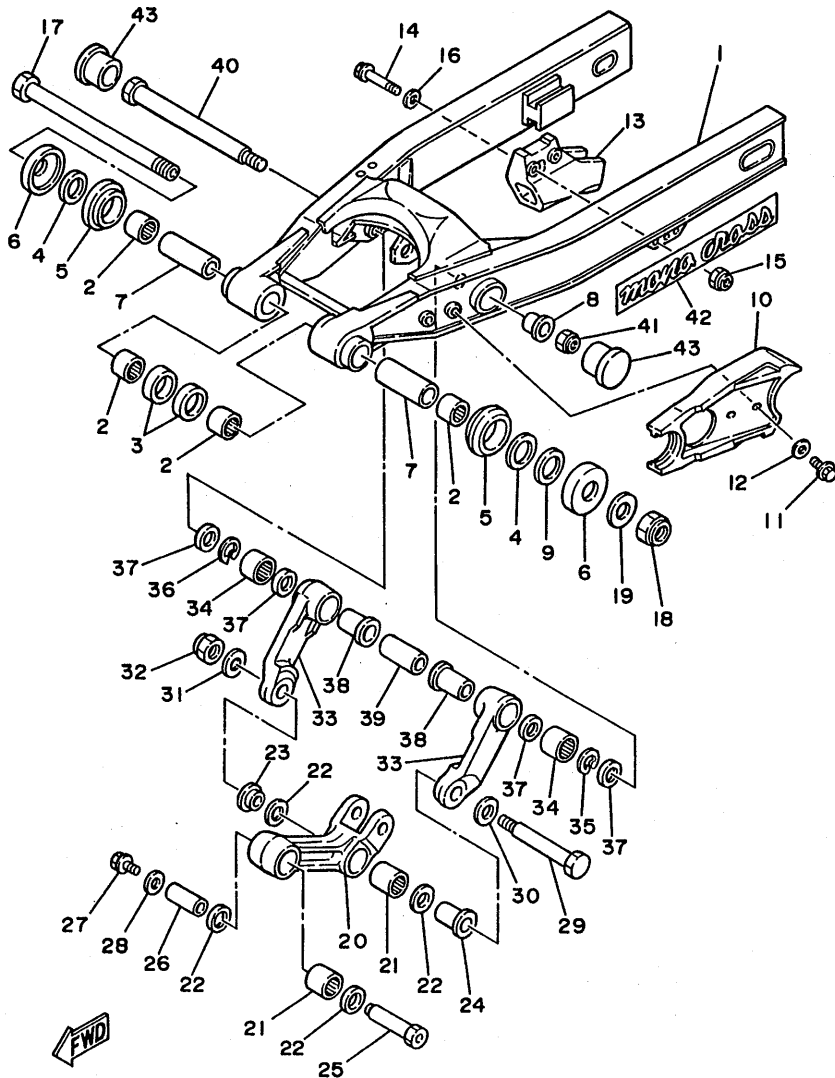
REF. NO.	PART NO.	DESCRIPTION	Q'TY	REMARKS
1	2VM-22110-00	REAR ARM COMP.	1	
2	93317-22262	BEARING, cylindrical	4 UR	
	93317-22263	BEARING, cylindrical	4 UR	
3	93106-22019	OIL SEAL	2	
4	93342-22208	BEARING	2	
5	93108-35004	OIL SEAL	2	
6	3R4-22129-00	COVER, thrust 2	2	
7	90380-16158	BUSH, solid	2	
8	90381-16060	BUSH, solid	1	
9	156-22127-00	SHIM (0.3T)	1 UN	
10	TLX-22151-00	SEAL, guard	1	
11	98001-06020	BOLT	2	
12	90201-06067	WASHER, plate	2	
13	39W-22199-01	SUPPORT, chain	1	
14	91002-08045	BOLT, flange	2	
15	95602-08200	NUT, self-locking	2	
16	92901-08200	WASHER, plain	2	
17	5X4-22141-01	SHAFT, pivot	1	
18	90185-16127	NUT, self-locking	1	
19	90201-164H4	WASHER, plate	1	
20	2VM-2217A-00	ARM, relay	1	
21	93315-22046	BEARING, cylindrical	2	
22	93109-20029	OIL SEAL	4	
23	90387-164N2	COLLAR	1	
24	90387-164N3	COLLAR	1	
25	90179-10544	NUT	1	
26	90387-167R5	COLLAR	1	
27	91011-10016	BOLT, flange	1	



2VM100-8190

FIG. 19 REAR ARM

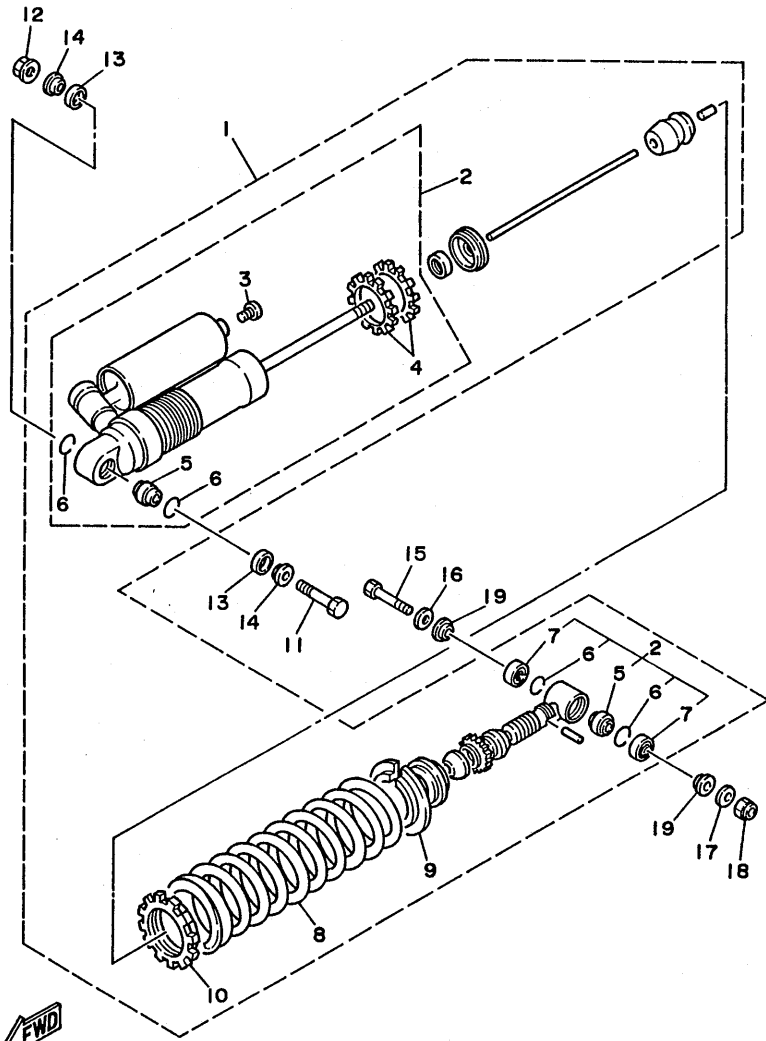
REF. NO.	PART NO.	DESCRIPTION	Q'TY	REMARKS
28	90201-106F2	WASHER, plate	1	
29	90109-145E4	BOLT	1	
30	90201-164H4	WASHER, plate	1	
31	90201-14740	WASHER, plate	1	
32	90185-14112	NUT, self-locking	1	
33	2VM-2217F-00	ROD, connecting 1	2	
34	93315-22045	BEARING (YT202720E01)	2	IKO
35	93450-28063	CIRCLIP	1	
36	93450-28063	CIRCLIP	1	
37	93109-20029	OIL SEAL	4	
38	90387-164N3	COLLAR	2	
39	90387-167R4	COLLAR	1	
40	90109-145E5	BOLT	1	
41	95601-14200	NUT, self-locking	1	
42	2HH-2218A-00	EMBLEM, rear arm	2	
43	1HX-2135F-00	COVER	2	



2VM100-8190

FIG. 20 REAR SUSPENSION

REF. NO.	PART NO.	DESCRIPTION	Q'TY	REMARKS
1	2VM-22210-11-6W	SHOCK ABSORBER ASSY, rear	1	NATIVE RED
* 2	2VM-22201-10	.DAMPER SUB ASSY	1	
3	98501-04006	..SCREW, pan head	1	
4	1LX-22225-00	..RING, hold	2	
5	93399-99927	..BEARING	2	
6	93440-30113	..CIRCLIP	4	
7	93104-18077	..OIL SEAL	2	
8	2HH-22212-20-6W	.SPRING (K=5.0)	1	NATIVE RED
9	2VN-22214-00	.GUIDE, spring l	1	
10	1LX-22223-00	.SEAT, spring lower	1	
11	90109-10704	BOLT	1	
12	90185-10115	NUT, self-locking	1	
13	23X-22211-00	COVER	2	
14	90387-127G8	COLLAR	2	
15	90109-102E6	BOLT	1	
16	90201-120E6	WASHER, plate	1	
17	90201-100E9	WASHER, plate	1	
18	90185-10120	NUT, self-locking	1	
19	90387-126H8	COLLAR	2	

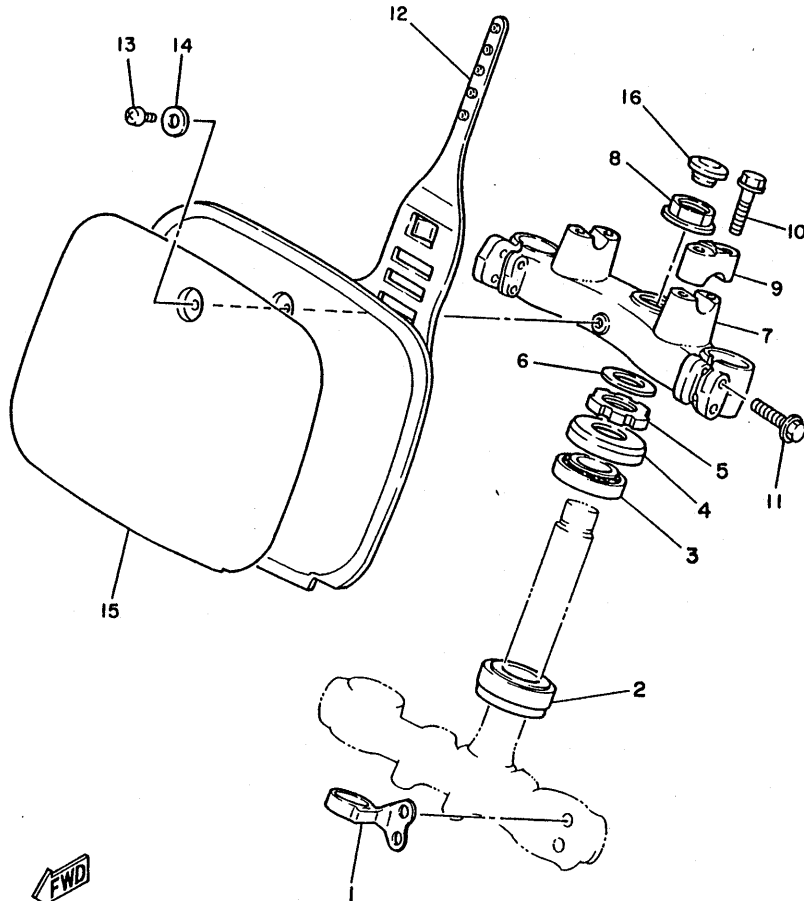


2VN100-8200

C12

FIG. 21 STEERING

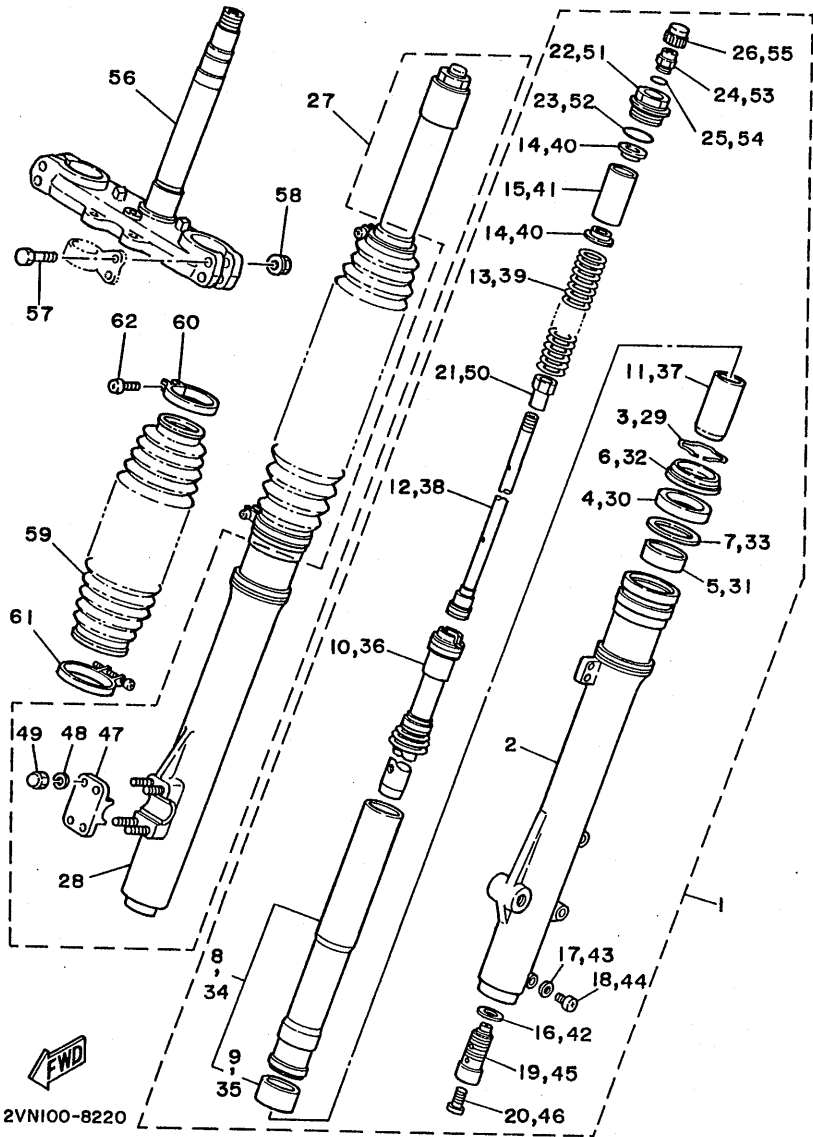
REF. NO.	PART NO.	DESCRIPTION	Q'TY	REMARKS
1	3R4-23389-00	GUIDE, cable	1	
2	93332-00067	BEARING	1	
3	93332-00068	BEARING	1	
4	2HG-23416-00	COVER, ball race 2	1	
5	90170-24373	NUT	1	
6	90201-247L2	WASHER, plate	1	
7	2HG-23435-00-98	CROWN, handle	1	LOW GLOSS BLACK
8	90179-28543	NUT	1	
9	1E6-23441-00	HOLDER, handle upper	2	
10	91021-08035	BOLT, flange	4	
11	91021-08040	BOLT, flange	4	
12	5X6-23485-11	PLATE, number	1	CLEAN WHITE
13	92501-06012	SCREW, pan head	1	
14	90201-06571	WASHER, plate	1	
15	2VN-23395-00	EMBLEM	1	
16	34K-2319U-00	CAP	1	



2VM100-8210

FIG. 22 FRONT FORK

REF. NO.	PART NO.	DESCRIPTION	Q'TY	REMARKS
1	2VM-23102-M0	FRONT FORK ASSY (L.H)	1	
2	2VM-23126-L0	.TUBE, outer 1	1	
3	4V4-23153-L0	.RING, snap	1	
4	2VM-23145-L0	.OIL SEAL	1	
5	4V4-23125-L0	.METAL, slide 1	1	
6	2VM-23144-L0	.SEAL, dust	1	
7	4V4-23146-L0	.WASHER, oil seal	1	
8	2VM-23110-L0	.INNER TUBE COMP.1	1	
9	4V4-23171-L0	..PISTON, front fork	1	
10	2VM-23170-L0	.CYLINDER COMP., front fork	1	
11	2VM-23173-L0	.SPINDLE, taper	1	
12	2VM-2314A-M0	.PISTON ROD ASSY	1	
13	2VM-23141-M0	.SPRING, front fork (K=0.40)	1	
14	4V4-23142-L0	.SEAT, spring upper	2	
15	2VM-23118-L0	.SPACER (L=38.5)	1	
16	2HH-23158-L0	.GASKET	1	
17	122-23129-00	.GASKET, drain plug	1	
18	4H7-23119-00	.PLUG, drain	1	
19	2VM-2316A-L0	.VALVE COMP.	1	
20	55Y-23126-M0	.PLUG	1	
21	90170-10372	.NUT	1	
22	2VM-23111-L0	.BOLT, cap	1	
23	4V4-23188-L0	.O-RING	1	
24	23X-23190-L0	.AIR VALVE COMP.	1	
25	3J2-23147-00	.O-RING	1	
26	2VN-23185-L0	.COVER, valve	1	
27	2VM-23103-M0	FRONT FORK ASSY (R.H)	1	
28	2VM-23136-L0	.TUBE, outer 2	1	



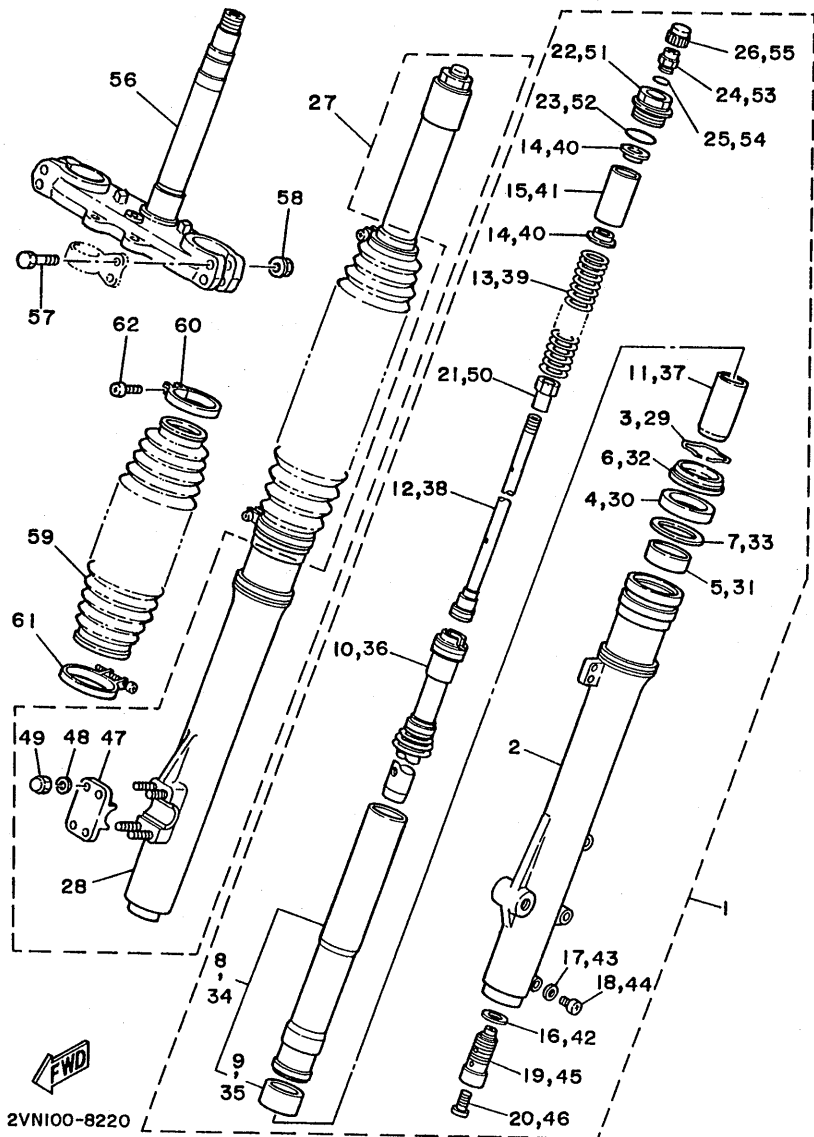
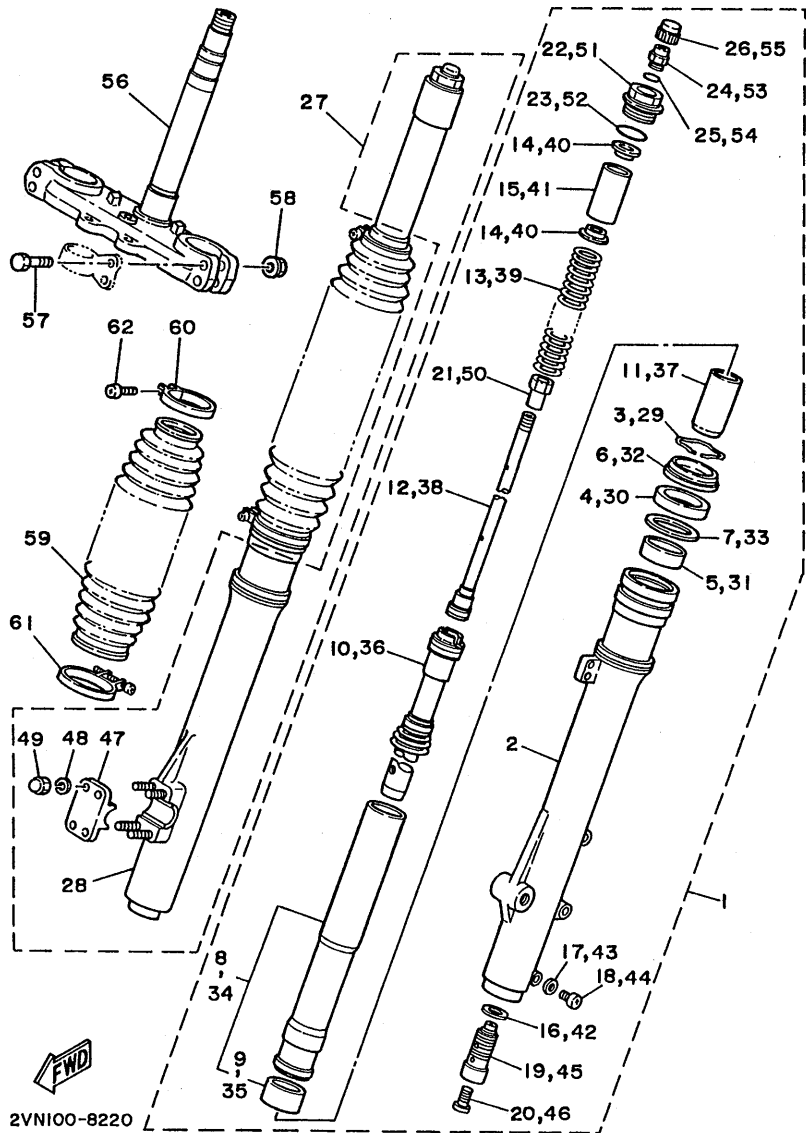


FIG. 22 FRONT FORK

REF. NO.	PART NO.	DESCRIPTION	Q'TY	REMARKS
29	4V4-23153-L0	.RING, snap	1	
30	2VM-23145-L0	.OIL SEAL	1	
31	4V4-23125-L0	.METAL, slide 1	1	
32	2VM-23144-L0	.SEAL, dust	1	
33	4V4-23146-L0	.WASHER, oil seal	1	
34	2VM-23110-L0	.INNER TUBE COMP.1	1	
35	4V4-23171-L0	..PISTON, front fork	1	
36	2VM-23170-L0	.CYLINDER COMP., front fork	1	
37	2VM-23173-L0	.SPINDLE, taper	1	
38	2VM-2314A-M0	.PISTON ROD ASSY	1	
39	2VM-23141-M0	.SPRING, front fork (K=0.40)	1	
40	4V4-23142-L0	.SEAT, spring upper	2	
41	2VM-23118-L0	.SPACER (L=38.5)	1	
42	2HH-23158-L0	.GASKET	1	
43	122-23129-00	.GASKET, drain plug	1	
44	4H7-23119-00	.PLUG, drain	1	
45	2VM-2316A-L0	.VALVE COMP.	1	
46	55Y-23126-M0	.PLUG	1	
47	1LX-23167-L0	.HOLDER, axle	1	
48	92990-06100	.WASHER, spring	4	
49	5Y3-23393-00	.NUT, special	4	
50	90170-10372	.NUT	1	
51	2VM-23111-L0	.BOLT, cap	1	
52	4V4-23188-L0	.O-RING	1	
53	23X-23190-L0	.AIR VALVE COMP.	1	
54	3J2-23147-00	.O-RING	1	
55	2VN-23185-L0	.COVER, valve	1	
56	2VM-23340-L0	UNDER BRACKET COMP.	1	

FIG. 22 FRONT FORK

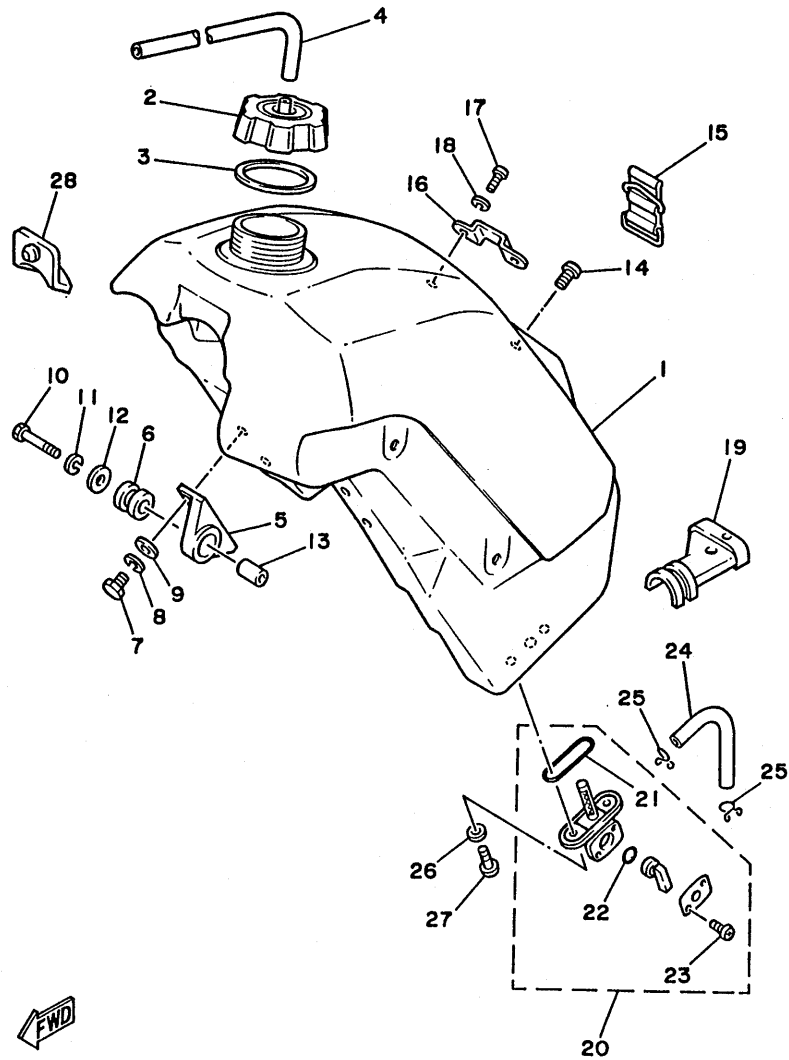
REF. NO.	PART NO.	DESCRIPTION	Q'TY	REMARKS
57	90105-08463	BOLT, washer based	4	
58	95701-08500	NUT, flange	4	
59	43M-23191-L0	BOOT	2	RED
60	43M-23192-L0	BAND	2	
61	43M-23489-L0	BAND	2	
62	98506-04018	SCREW, pan head	2	



2VN100-8220

D2

FIG. 23 FUEL TANK

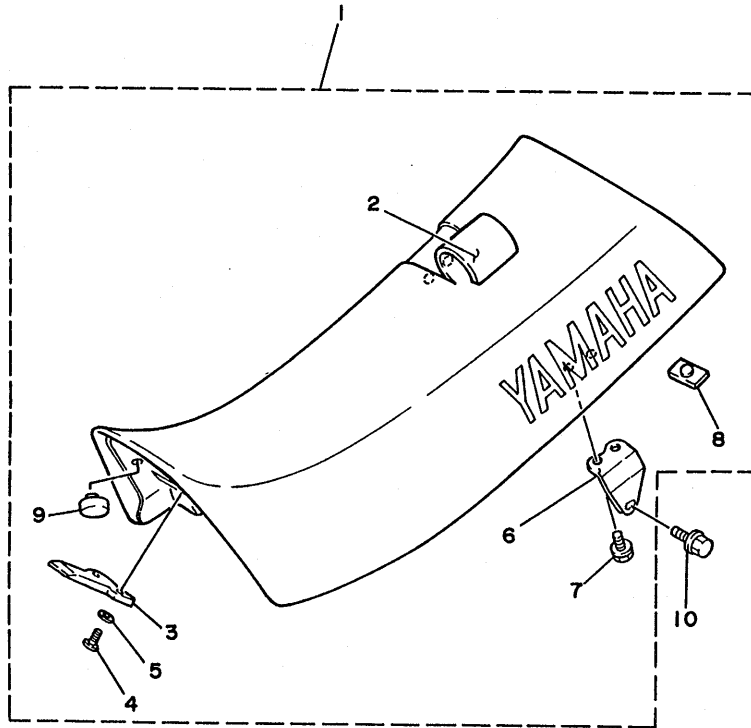


REF. NO.	PART NO.	DESCRIPTION	Q'TY	REMARKS
1	2VM-24110-00	FUEL TANK COMP.	1	
2	5X7-24611-01	BODY, cap	1	
3	5X7-24612-00	GASKET, cap	1	
4	90445-09100	HOSE	1	
5	24X-24144-00	HOLDER, damper	2	
6	90480-18354	GROMMET	2	
7	97313-06016	BOLT	4	
8	92990-06100	WASHER, spring	4	
9	92901-06600	WASHER, plate	4	
10	97013-06035	BOLT	2	
11	92990-06100	WASHER, spring	2	
12	90201-06070	WASHER, plate	2	
13	90387-06387	COLLAR	2	
14	98980-06020	SCREW, bind	1	
15	59V-24173-00	BAND, tank fitting 1	1	
16	5X6-2412F-00	BRACKET, seat	1	
17	92501-06012	SCREW, pan head	2	
18	92990-06100	WASHER, spring	2	
19	1LX-24181-00	DAMPER, locating 1	1	
20	2VN-24500-00	FUEL COCK ASSY 1	1	
21	4X8-24512-00	.GASKET	1	
22	4X8-24534-00	.SEAL, cock	1	
23	97801-03008	.SCREW, pan head	2	
24	90445-11452	HOSE	1	
25	90467-10008	CLIP	2	
26	90202-06010	WASHER, plate	2	
27	90149-06011	SCREW	2	
28	23X-24184-00	DAMPER, locating 4	1	

  
 ILU010-6230

**D3**

FIG. 24 SEAT



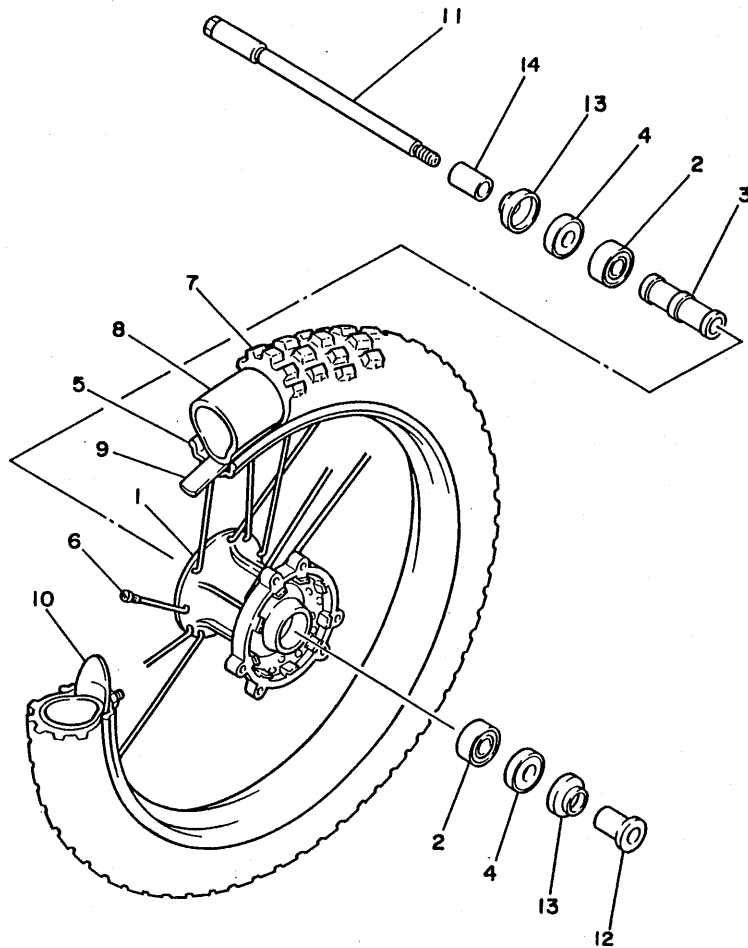
REF. NO.	PART NO.	DESCRIPTION	Q'TY	REMARKS
1	2VM-24770-00	SEMI-DOUBLE SEAT ASSY	1	
2	2VM-24731-10	.COVER, seat	1	
3	5X6-24748-10	.BRACKET, seat	1	
4	92501-06012	.SCREW, pan head	2	
5	92901-06200	.WASHER, plain	2	
6	1LX-24738-01	.BRACKET, seat	2	
7	95023-06012	.BOLT, flange	4	
8	509-24724-00	.DAMPER, seat	1	
9	3L7-24724-00	.DAMPER, seat	2	
10	95023-08016	BOLT, flange	2	



ILX010-6240

D4

FIG. 25 FRONT WHEEL



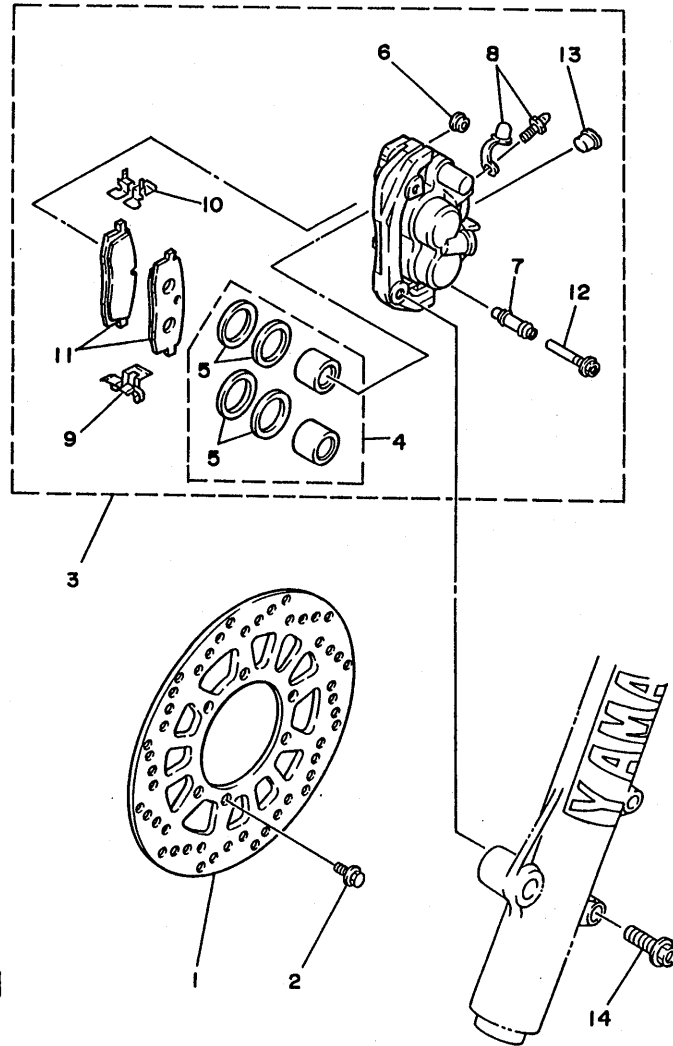
REF. NO.	PART NO.	DESCRIPTION	Q'TY	REMARKS
1	2HH-25111-00-98	HUB, front	1	LOW GLOSS BLACK
2	93306-20209	BEARING (B6202)	2	
3	90560-15240	SPACER	1	
4	93102-20281	OIL SEAL	2	
5	94416-21455	RIM (1.60-21)	1	
6	1LX-25104-00	SPOKE SET, front	1	
7	*	TIRE	1	LM PIRELLI
8	*	TUBE (2.75-21)	1	LM PIRELLI
9	*	BAND, rim	1	UR LM PIRELLI
	94330-21084	BAND, rim (3.00-21)	1	UR BRIDGESTONE
10	2J5-25394-01	SPACER, bead	1	
11	55U-25181-00	AXLE, wheel	1	
12	90387-157L9	COLLAR	1	
13	322-25118-00	COVER, hub dust	2	
14	90387-156R7	COLLAR	1	



2HH100-7250

D5

FIG. 26 FRONT BRAKE CALIPER

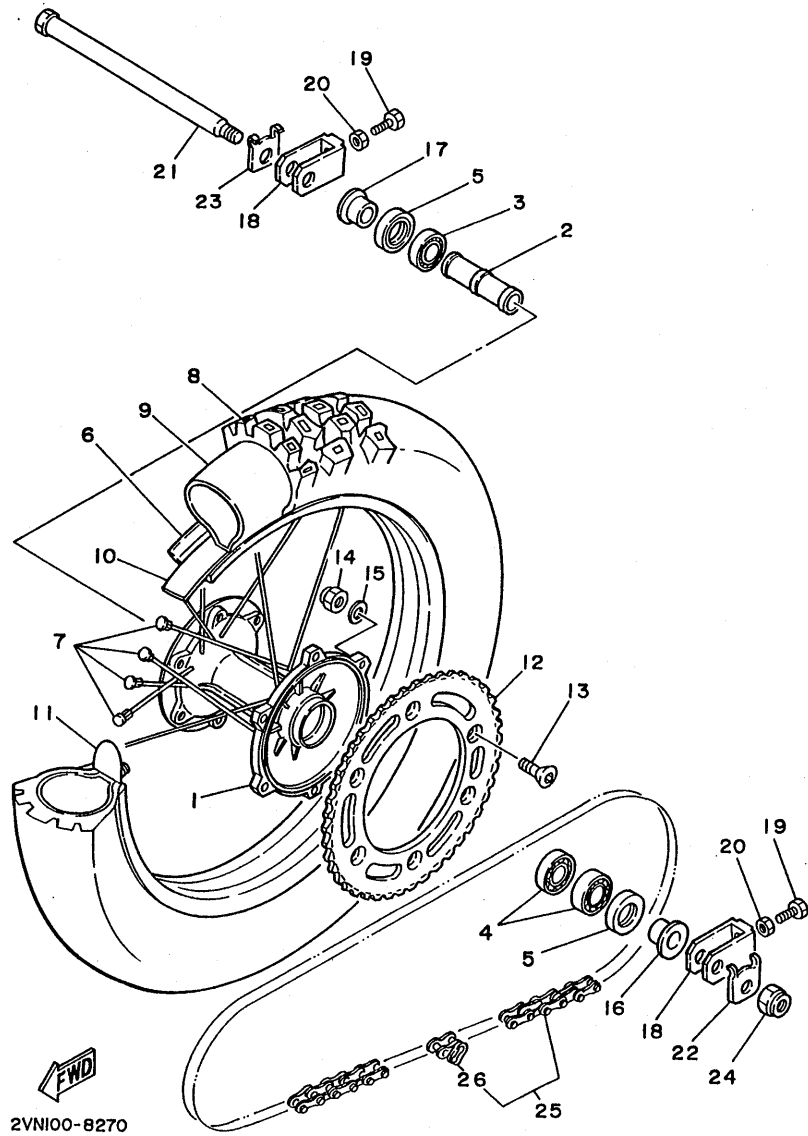


REF. NO.	PART NO.	DESCRIPTION	Q'TY	REMARKS
1	2VN-25831-00	DISC, brake (RIGHT)	1	
2	90109-06757	BOLT	6	
3	2HH-25810-00	CALIPER ASSY (RIGHT)	1	
4	56A-W0057-00	.PISTON ASSY, caliper	1	
5	56A-W0047-00	..CALIPER SEAL KIT	1	
6	5R2-25917-00	.BOOT, caliper	1	
7	56A-25937-00	.BOOT 2	1	
8	51L-W0048-00	.BREED SCREW KIT	1	
9	56A-25919-00	.SUPPORT, pad	1	
10	56A-25919-10	.SUPPORT, pad	1	
11	2HH-W0045-00	.BRAKE PAD KIT, front	1	
12	56A-25926-00	.BOLT	1	
13	34X-25845-00	.CAP, indicator	1	
14	91011-08045	BOLT, flange	2	



ILX010-6260

D6



2VN100-8270

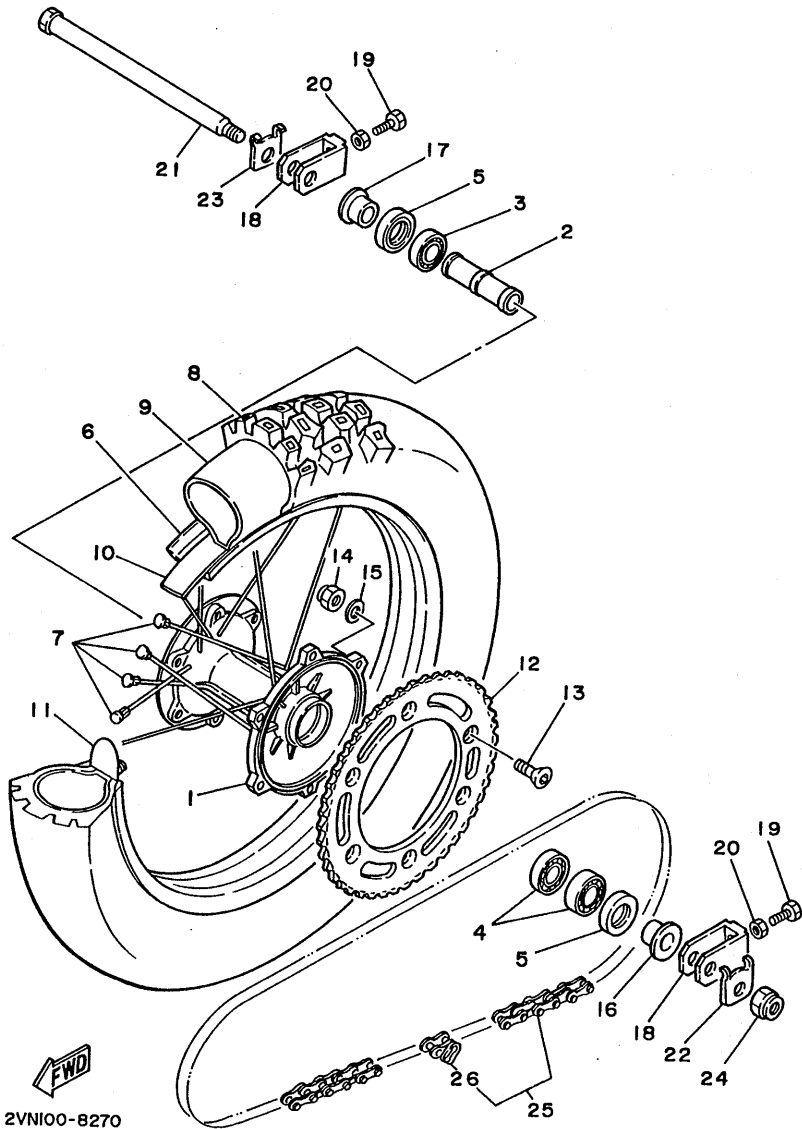
FIG. 27 REAR WHEEL

REF. NO.	PART NO.	DESCRIPTION	Q'TY	REMARKS
1	2VN-25311-00-98	HUB, rear	1	LOW GLOSS BLACK
2	90560-20278	SPACER	1	
3	93306-00418	BEARING	1	
4	93306-00406	BEARING (B6004Z)	2	
5	93106-28023	OIL SEAL	2	
6	94421-18456	RIM (2.15-18)	1	
7	2VN-25304-00	SPOKE SET, rear	1	
8	*	TIRE	1	LM PIRELLI
9	*	TUBE (3.50-18)	1	LM PIRELLI
10	*	BAND, rim (1.85-2.75-18)	1	UR LM PIRELLI
	94340-18086	BAND, rim (4.00-18)	1	UR BRIDGESTONE
11	39X-25394-00	SPACER, bead	2	
12	2HH-25449-00	SPROCKET, driven (49T)	1	STD
	39W-25444-00	SPROCKET, driven (44T)	1	AP
	39W-25445-00	SPROCKET, driven (45T)	1	AP
	39W-25446-00	SPROCKET, driven (46T)	1	AP
	39W-25448-00	SPROCKET, driven (48T)	1	AP
	39W-25450-00	SPROCKET, driven (50T)	1	AP
	39W-25452-00	SPROCKET, driven (52T)	1	AP
13	90109-08792	BOLT	6	
14	95611-08100	NUT, u	6	
15	90201-081A6	WASHER, plate	6	
16	90387-200H2	COLLAR	1	
17	90387-202U8	COLLAR	1	
18	56A-25388-01	PULLER, chain l	2	
19	90101-08475	BOLT	2	
20	95303-08700	NUT	2	
21	23X-25381-00	AXLE, wheel	1	

**D7**

FIG. 27 REAR WHEEL

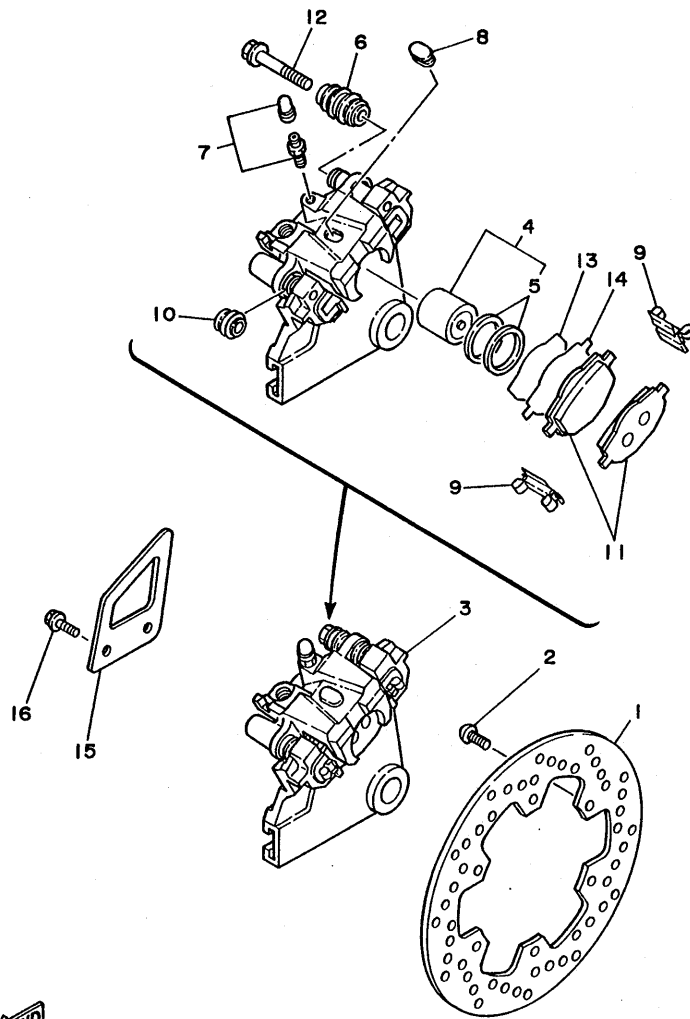
REF. NO.	PART NO.	DESCRIPTION	Q'TY	REMARKS
22	90209-21243	WASHER	1	
23	90209-18244	WASHER	1	
24	90185-18104	NUT, self-locking	1	
25	94585-20114	CHAIN, drive (D.I.D 520DS 114L)	1	
26	94685-20001	.JOINT, chain (D.I.D 520DS)	1	



2VN100-8270

D8

FIG. 28 REAR BRAKE CALIPER



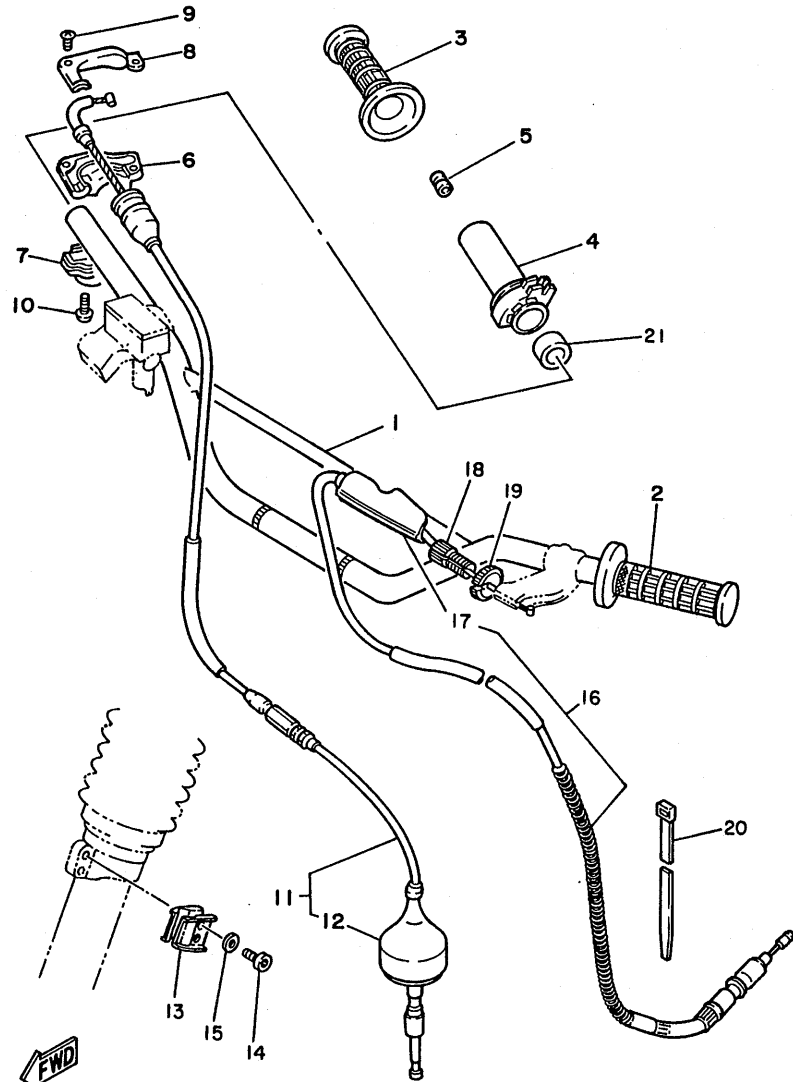
REF. NO.	PART NO.	DESCRIPTION	Q'TY	REMARKS
1	2VN-25831-50	DISC, brake	1	
2	90149-06251	SCREW	6	
3	2VN-25810-50	CALIPER ASSY	1	
4	2VN-W0057-00	.PISTON ASSY, caliper	1	
5	2NA-W0047-00	..CALIPER SEAL KIT	1	
6	34X-25937-00	.BOOT 2	1	
7	51L-W0048-00	.BREED SCREW KIT	1	
8	34X-25845-00	.CAP, indicator	1	
9	2KF-25919-00	.SUPPORT, pad	2	
10	5R2-25937-00	.BOOT 2	1	
11	2VN-W0046-00	.BRAKE PAD KIT, rear	1	
12	2GV-25926-00	.BOLT	1	
13	2KF-25827-00	.SHIM, caliper	1	
14	2KF-25828-00	.SHIM, caliper	1	
15	2KF-27491-00	PROTECTOR	1	
16	95023-06016	BOLT, flange	2	



2VNI00-8280

D9

FIG. 29 STEERING HANDLE. CABLE

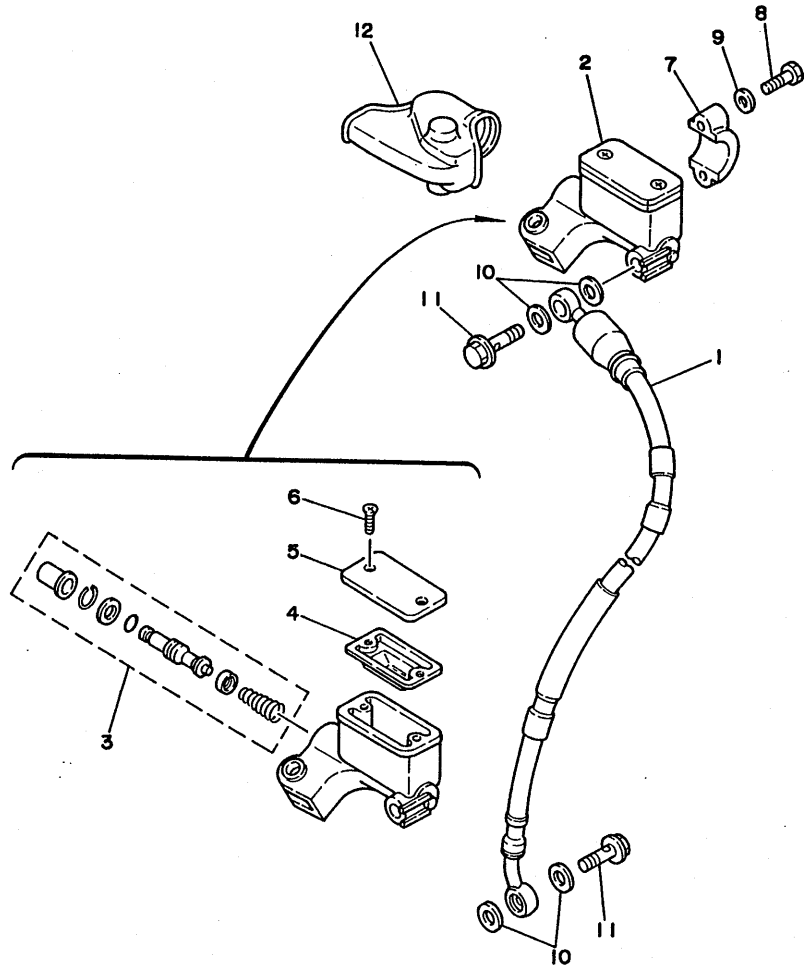


REF. NO.	PART NO.	DESCRIPTION	Q'TY	REMARKS
1	2VN-26111-00	HANDLEBAR	1	NEBURA GOLD
2	1LX-26241-01	GRIP (L.H)	1	
3	1LX-26242-01	GRIP (R.H)	1	
4	23X-26243-00	TUBE, throttle guide	1	
5	688-82535-00	GROMMET	1	
6	23X-26281-00	CAP, grip upper	1	
7	431-26282-01-98	CAP, grip lower	1	LOW GLOSS BLACK
8	5X2-2628H-01	CAP, wire	1	
9	98706-04012	SCREW, flat head	2	
10	98506-05016	SCREW, pan head	2	
11	23X-26311-01	CABLE, throttle 1	1	
12	510-26329-00	.CAP, rubber	1	
13	90465-16258	CLAMP	2	
14	91311-06016	BOLT	2	
15	92901-06600	WASHER, plate	2	
16	2VM-26335-00	CABLE, clutch	1	
17	382-26372-01	.COVER, handle lever 1	1	
18	90123-08090	BOLT	1	
19	90179-08401	NUT	1	
20	90465-13154	CLAMP	1	
21	90560-22281	SPACER	1	

2VM100-8290

D10

FIG. 30 FRONT MASTER CYLINDER



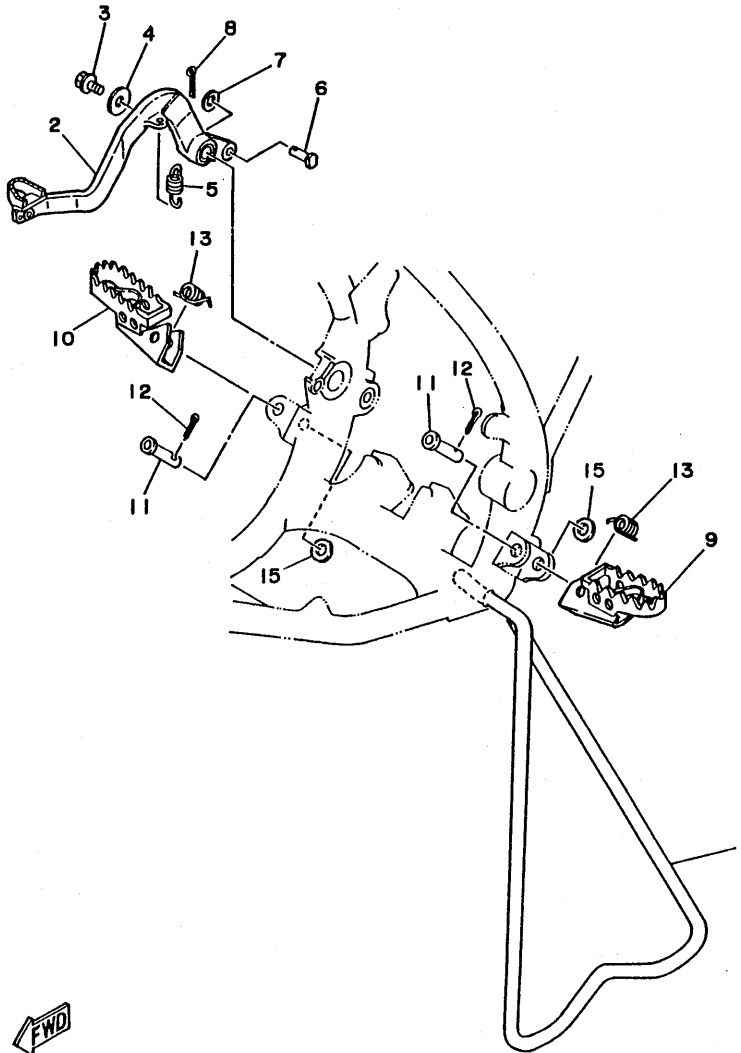
REF. NO.	PART NO.	DESCRIPTION	Q'TY	REMARKS
1	1RG-25872-10	HOSE, brake 1	1	
* 2	2VN-25870-00	MASTER CYLINDER ASSY	1	
3	56A-W0041-00	.CYLINDER KIT, master	1	
4	56A-25854-00	.DIAPHRAGM, reservoir	1	
5	2VN-25852-00	.CAP, reservoir	1	
6	98706-04012	.SCREW, flat head	2	
7	56A-25867-00	BRACKET, master cylinder	1	
8	97016-06025	BOLT	2	
9	92906-06600	WASHER, plate	2	
10	90201-10118	WASHER, plate	4	
11	90401-10034	BOLT, union	2	
12	56A-26372-00	COVER, handle lever 1	1	



2HJ100-7260

D11

FIG. 31 STAND. FOOTREST



REF. NO.	PART NO.	DESCRIPTION	Q'TY	REMARKS
1	1LX-27311-00	STAND, side	1	
2	2VM-27200-01	PEDAL, brake	1	
3	92011-08012	SCREW	1	
4	90201-08730	WASHER, plate	1	
5	90506-14410	SPRING, tension	1	
6	90240-08120	PIN, clevis	1	
7	90201-08544	WASHER, plate	1	
8	91401-25015	PIN, cotter	1	
9	2VN-27411-00	FOOTREST 1	1	
10	2VN-27421-00	FOOTREST 2	1	
11	90240-10117	PIN, clevis	2	
12	91401-25015	PIN, cotter	2	
13	90508-20583	SPRING, torsion	2	
*				
15	90201-10119	WASHER, plate	2	

 2VM300-8311

**D12**

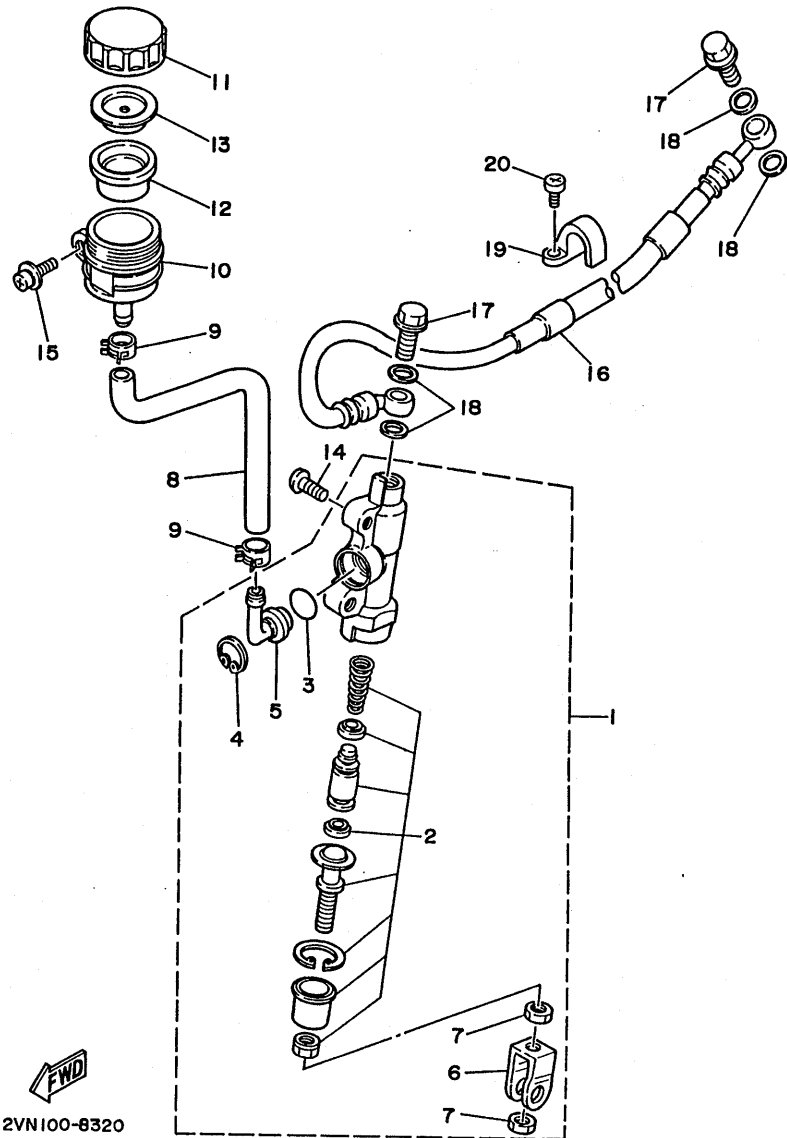
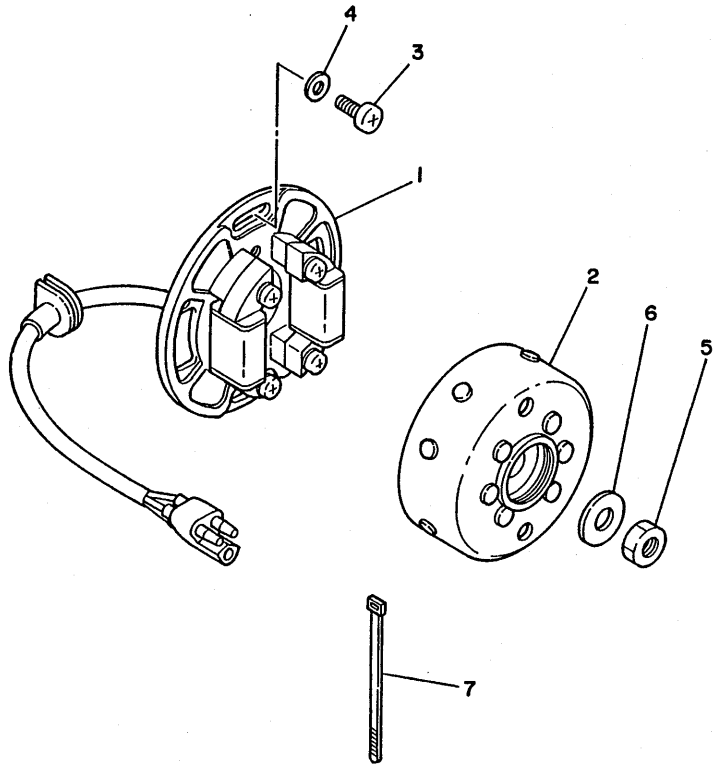


FIG. 32 REAR MASTER CYLINDER

REF. NO.	PART NO.	DESCRIPTION	Q'TY	REMARKS
1	2VN-25850-50	MASTER CYLINDER ASSY	1	
2	1FK-W0042-50	.CYLINDER KIT, master	1	
3	93210-15620	.O-RING	1	
4	2VN-25866-00	.CIRCLIP	1	
5	2VN-2582A-50	.JOINT	1	
6	2VN-27222-00	.JOINT	1	
7	95303-08600	.NUT	2	
8	2VN-25895-00	HOSE, reservoir	1	
9	90467-11044	CLIP	2	
10	2VN-25894-00	TANK, reservoir	1	
11	2VN-25852-50	CAP, reservoir	1	
12	2VN-25854-00	DIAPHRAGM, reservoir	1	
13	2VN-25855-00	BUSH, diaphragm	1	
14	92011-06016	SCREW	2	
15	90159-06056	SCREW, with washer	1	
16	2VN-25872-50	HOSE, brake 1	1	
17	90401-10034	BOLT, union	2	
18	90201-10118	WASHER, plate	4	
19	2VM-25876-00	HOLDER, brake hose 2	1	
20	98580-05010	SCREW, pan head	2	

FIG. 33 GENERATOR

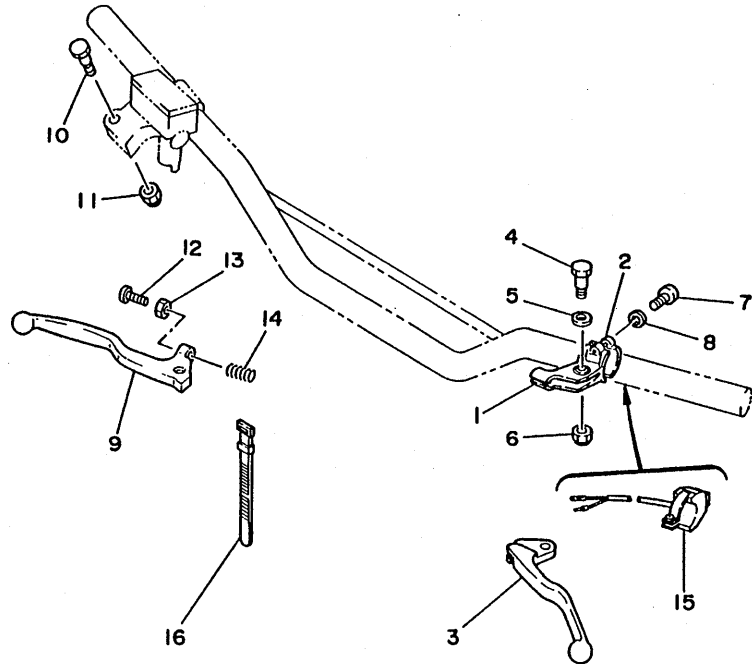
REF. NO.	PART NO.	DESCRIPTION	Q'TY	REMARKS
1	2VM-85510-KO	STATOR ASSY	1	
2	2VM-85550-KO	ROTOR ASSY	1	
3	92501-06020	SCREW, pan head	2	
4	92901-06600	WASHER, plate	2	
5	95311-10600	NUT	1	
6	90201-10774	WASHER, plate	1	
7	437-83936-10	BAND, switch cord	1	



2VM300-8331

D14

FIG. 34 HANDLE SWITCH, LEVER



REF. NO.	PART NO.	DESCRIPTION	Q'TY	REMARKS
1	38V-82911-00	HOLDER, lever 1	1	
2	38V-82913-00	HOLDER, lever lower 1	1	
3	23X-83912-00	LEVER 1	1	
4	90109-06797	BOLT	1	
5	90201-082A9	WASHER, plate	1	
6	95606-06100	NUT, u	1	
7	98506-05018	SCREW, pan head	2	
8	92906-05100	WASHER, spring	2	
9	55Y-83922-00	LEVER 2	1	
10	90109-06577	BOLT	1	
11	95606-06100	NUT, u	1	
12	90149-06153	SCREW	1	
13	90170-06010	NUT	1	
14	90501-10312	SPRING, compression	1	
15	23X-83976-00	SWITCH, handle 1	1	
16	437-83936-00	BAND, switch cord	2	



56A110-5320

D15

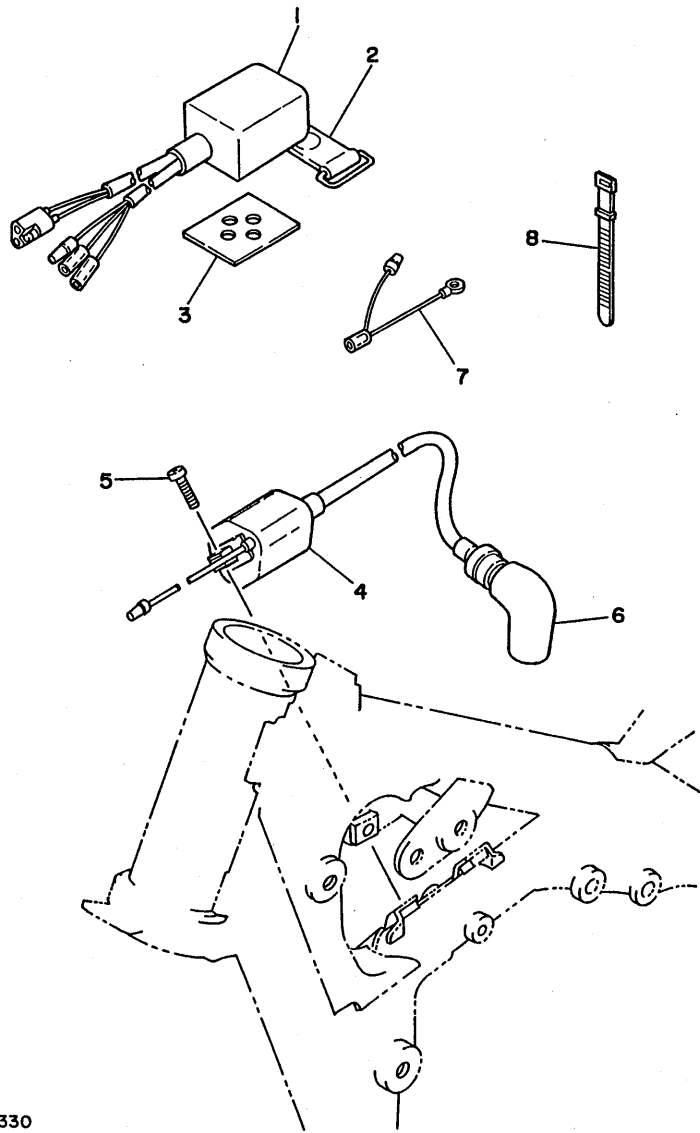


FIG. 35 ELECTRICAL 1

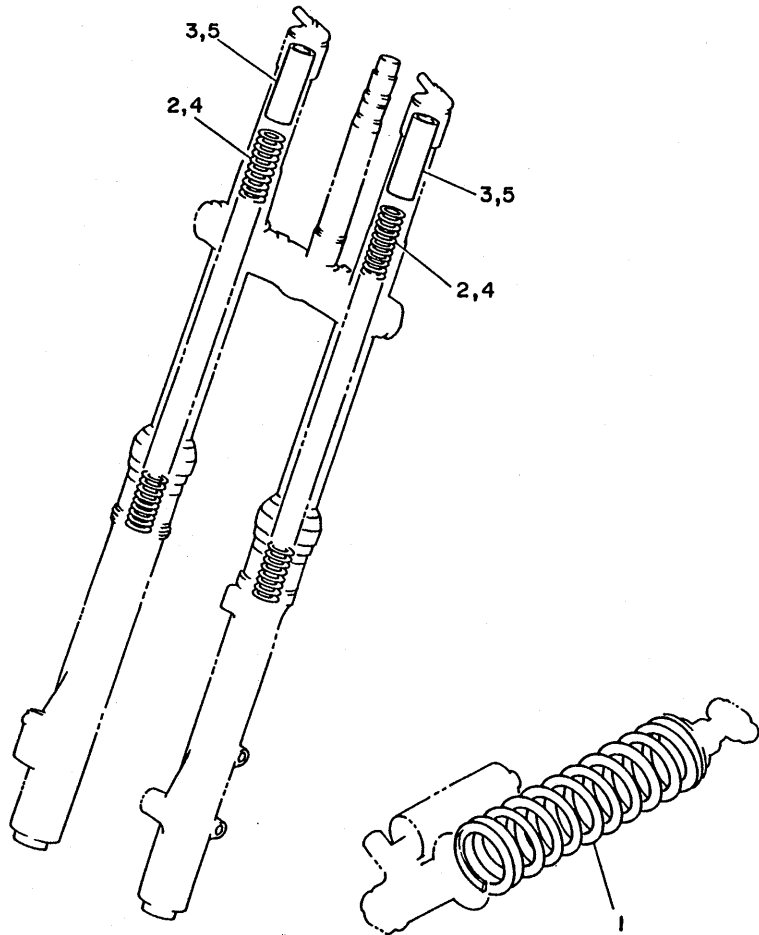
REF. NO.	PART NO.	DESCRIPTION	Q'TY	REMARKS
1	2HH-85540-K0	C.D.I. UNIT ASSY	1	
2	21V-21376-00	BAND, tool	1	
3	2K7-85547-00	DAMPER	1	
4	24X-82310-10	IGNITION COIL ASSY	1	
5	92502-06016	SCREW, pan head	2	
6	3R0-82370-20	PLUG CAP ASSY	1	
7	5X1-82519-01	WIRE, earth lead	1	
8	25G-83936-00	BAND, switch cord	1	



2HH100-7330

E2

FIG. 36 ALTERNATE 1 (CHASSIS)



REF. NO.	PART NO.	DESCRIPTION	Q'TY	REMARKS
1	1LX-22212-20-6W	SPRING (K=4.75)	1	AP NATIVE RED (SOFT)
	1LV-22212-10-6W	SPRING (K=5.25)	1	AP NATIVE RED (HARD)
2	2VM-23141-L0	SPRING, front fork (K=0.375)	1	} (SOFT) WITH SET
3	2VM-23118-L0	SPACER (L=38.5)	1	
4	2WH-23141-L0	SPRING, front fork (K=0.425)	1	(HARD)



2HH100-7340

E3

FIG. 37 REPAIR KIT

REF. NO.	PART NO.	DESCRIPTION	Q'TY	REMARKS
1	2VM-11630-00	PISTON ASSY (STD)	1	AP
2	2VM-11631-00-93	.PISTON (STD)	1	
3	56A-11601-00	.PISTON RING SET (STD)	1	
4	2VM-11633-00	.PIN, piston	1	
5	93450-19052	.CIRCLIP	2	
6	2VM-11630-10	PISTON ASSY (1ST O/S)	1	AP
7	2VM-11635-00	.PISTON (0.25MM O/S)	1	
8	56A-11601-10	.PISTON RING SET (1ST O/S)	1	
9	2VM-11633-00	.PIN, piston	1	
10	93450-19052	.CIRCLIP	2	
11	2VM-11630-20	PISTON ASSY (2ND O/S)	1	AP
12	2VM-11636-00	.PISTON (0.50MM O/S)	1	
13	56A-11601-20	.PISTON RING SET (2ND O/S)	1	
14	2VM-11633-00	.PIN, piston	1	
15	93450-19052	.CIRCLIP	2	
16	2VM-11630-30	PISTON ASSY (3RD O/S)	1	AP
17	2VM-11637-00	.PISTON (0.75MM O/S)	1	
18	56A-11601-30	.PISTON RING SET (3RD O/S)	1	
19	2VM-11633-00	.PIN, piston	1	
20	93450-19052	.CIRCLIP	2	
21	24Y-11650-01	CONNECTING ROD ASSY	1	AP
22	2X4-11681-00	.PIN, crank 1	1	
23	24Y-11651-01	.ROD, connecting	1	
24	90209-25085	.WASHER	2	
*25	93310-425T1	.BEARING, cylindrical	1	
26	93310-418E9	.BEARING, cylindrical	1	

\* ..... Interchangeability

Ref. No.	Part No. for OLD	New ↔ Old / Old ↔ New		Part No. for NEW	Description	Q'ty	Modification	Remarks
		New ↔ Old	Old ↔ New					
1- 2	94701-00323			94702-00323	PLUG, spark (NGK B8EG)	1	○	
1-15-1	_____			93211-11770	O-RING	1	+	
1-20-1	_____			93104-16074	OIL SEAL	1	+	
5-14	90450-28014			90450-28014	HOSE CLAMP ASSY	12→8	△	
5-14-1	_____			90450-22017	HOSE CLAMP ASSY	4	+	
13- 3	2VM-17151-00			2VM-17141-00	GEAR, 4th pinion (19T)	1	○	
13- 8	2VM-17141-00			2VM-17151-00	GEAR, 5th pinion (23T)	1	○	
13-17	2VM-17251-00			2VM-17241-00	GEAR, 4th wheel (22T)	1	○	
13-21	2VM-17241-00			2VM-17251-00	GEAR, 5th wheel (23T)	1	○	
17- 1	5X6-21511-10	*		5X6-21511-11	FENDER, front	1	○	
18- 4	92506-06016			90159-06042	SCREW, with washer	3	○	
18- 5	92906-06600			_____	WASHER, plate	—	—	
18-33	_____			2VM-2172K-00	BRACKET 1	1	+	
18-34	_____			98501-05012	SCREW, pan head	1	+	
20- 2	2VM-22201-00			2VM-22201-10	. DAMPER SUB ASSY	1	○	
30- 2	2VN-25850-00	*		2VN-25870-00	MASTER CYLINDER ASSY	1	○	
31-14	90465-13154			_____	CLAMP	—	—	
37-25	93310-425N4			93310-425T1	. BEARING, cylindrical	1	○	

Mark : ○ ..... Part modified + ..... Part added - ..... Part deleted △ ..... Change of parts quantity

NUMERICAL INDEX

PART NO.	GRID NO.	PART NO.	GRID NO.	PART NO.	GRID NO.	PART NO.	GRID NO.	PART NO.	GRID NO.	PART NO.	GRID NO.
56A-W0041-00	D-11	24Y-11650-01	E- 4	2X8-14112-35	B- 9	2VM-15451-00	B-13	50W-21631-00	C- 4	122-23129-00	C-14
1FK-W0042-50	D-13	24Y-11651-01	B- 5	510-14115-00	B- 9	2VM-15462-00	B-13	39X-21642-00	C- 7		C-15
2HH-W0045-00	D- 6		E- 4	431-14131-00	B- 9	2VM-15620-00	B-14	2VM-21711-00-98	C- 8	2VM-23136-L0	C-14
2VN-W0046-00	D- 9	2X4-11681-00	B- 5	510-14141-R2	B- 9	23X-15621-01	B-14	24Y-2172A-00	C- 8	2VM-2314A-M0	C-14
2NA-W0047-00	D- 9		E- 4	510-14141-R4	B- 9	3R4-15641-00	B-14		C- 8		C-15
56A-W0047-00	D- 6	5X5-11911-01	B- 4	510-14141-R6	B- 9	38V-15651-00	B-14	2VM-2172K-00	C- 9	2VM-23141-L0	E- 3
51L-W0048-00	D- 6	5X5-11912-01	B- 4	193-14142-40	B- 9	2VM-15661-00	B-14	2VM-21721-00	C- 8	2VM-23141-M0	C-14
	D- 9	1LX-11915-00	B- 2	193-14142-45	B- 9	2VM-15664-00	B-14	2VM-2173L-00	C- 8		C-15
2VN-W0057-00	D- 9	5X4-11921-02	B- 4	193-14142-50	B- 9	2VM-16111-00	B-15	2VM-21731-00	C- 8	2WH-23141-L0	E- 3
56A-W0057-00	D- 6	5X5-11922-00	B- 4	137-14143-76	B- 9	2VM-16150-00	B-15	2VM-2174F-00	C- 8	4V4-23142-L0	C-14
39W-W1132-00	B- 2	1LX-11931-00	B- 4	137-14143-78	B- 9	2K7-16154-00	B-15	2VM-2174L-00	C- 8		C-15
2VM-W1441-00	B- 8	5X5-11937-00	B- 2	137-14143-80	B- 9		B-15	2VM-21741-00	C- 8	2VM-23144-L0	C-14
5X4-Y113F-00	B- 2	5X4-11952-00	B- 4	509-14145-00	B-10	2VM-16181-00	B-15	22W-21791-00	C- 9		C-15
2VM-Y1543-00	B-13	24X-11953-01	B- 4	3R4-14146-00	B-10	22U-16321-00	B-15	2VM-22110-00	C-10	2VM-23145-L0	C-14
2VM-11111-00	B- 2	2VM-11956-00	B-15	558-14147-00	B-10	4X7-16325-00	B-15	156-22127-00	C-10		C-15
2VM-1131A-00	B- 2	2VM-11990-00	B- 4	5X5-14153-00	B-10	2VM-16351-00	B-15	3R4-22129-00	C-10	4V4-23146-L0	C-14
5X4-1131N-00	B- 2	2VM-11992-00	B- 2	5Y9-14158-00	B- 9	2VM-16356-00	B-15	5X4-22141-01	C-10		C-15
2VM-11311-00	B- 2	2VM-11993-00	B- 3	1W3-14175-00	B-10	2VM-16357-00	B-15	1LX-22151-00	C-10	3J2-23147-00	C-14
2VM-11351-00	B- 2	2VM-11995-00	B- 3	363-14184-00	B- 9	2VM-16381-00	B-15	2VM-2217A-00	C-10		C-15
2VM-11400-00	B- 5	1LU-1240A-00	B- 7	2N7-14185-00	B- 9	2VM-17121-00	B-15	2VM-2217F-00	C-11	4V4-23153-L0	C-14
2VM-11412-00	B- 5	2VM-12422-00	B- 6	537-14186-00	B- 9	2VM-17121-00	C- 2	2HH-22178-00	C- 6		C-15
2VM-11422-00	B- 5	2VM-12428-00	B- 6	2K7-14197-00	B- 9	2VM-17131-00	C- 2	2HH-2218A-00	C-11	2HH-23158-L0	C-14
56A-11601-00	B- 5	2VM-12450-00	B- 6	310-14197-00	B- 9	2VM-17141-00	C- 2	39W-22199-01	C-10		C-15
	E- 4	2VM-12459-00	B- 6	2VM-14451-00	B- 8	2VM-17151-00	C- 2	2VM-22201-10	C-12	2VM-2316A-L0	C-14
56A-11601-10	B- 5	2VM-12460-00	B- 7	39W-14452-00	C- 8	2VM-17211-00	C- 2	2VM-22210-11-6W	C-12		C-15
	E- 4	22W-12462-00	B- 7	39X-14452-00	C- 8	2VM-17221-00	C- 2	23X-22211-00	C-12	1LX-23167-L0	C-15
56A-11601-20	B- 5	24X-12469-00	B- 7	2VM-14453-00	B- 8	2VM-17231-00	C- 2	1LV-22212-10-6W	E- 3	2VM-23170-L0	C-14
	E- 4	2VM-12476-00	B- 7	39K-14457-00	B- 8	2VM-17241-00	C- 2	1LX-22212-20-6W	E- 3		C-15
56A-11601-30	B- 5	2VM-12477-00	B- 7	2VM-14458-00	B- 8	2VM-17251-00	C- 2	2HH-22212-20-6W	C-12	4V4-23171-L0	C-14
	E- 4	1LU-1248A-00	B- 7	55Y-14459-01	B- 8	2VM-17411-00	C- 2	2VN-22214-00	C-12		C-15
2VM-11630-00	E- 4	2VM-12481-00	B- 7	39W-14462-00	B- 8	2VM-17421-00	C- 2	1LX-22223-00	C-12	2VM-23173-L0	C-14
2VM-11630-10	E- 4	2VM-12482-00	B- 7	2VM-14468-00	B- 8	4L0-17471-00	B-12	1LX-22225-00	C-12		C-15
2VM-11630-20	E- 4	2VM-12483-00	B- 7	2VM-14477-00	B- 8	2VM-18101-00	C- 5	2VM-23102-M0	C-14	2VN-23185-L0	C-14
2VM-11630-30	E- 4	39X-12485-00	B- 7	2VM-14610-00	B-11	2VM-18110-00	C- 5	2VM-23103-M0	C-14		C-15
2VM-11631-00-93	B- 5	353-13115-01	B-12	3R4-14613-00	B-11	22W-18140-00	C- 4	2VM-23110-L0	C-14	4V4-23188-L0	C-14
	E- 4	2VM-13565-00	B- 8	2HH-1469A-10	B-11	2VM-18511-00	C- 4		C-15		C-15
2VM-11631-00-94	B- 5	56A-13610-01	B- 8	39X-14747-00	B-11	2VM-18512-00	C- 4	2VM-23111-L0	C-14	34K-2319U-00	C-13
2VM-11633-00	B- 5	56A-13613-00	B- 8	2VM-14753-00	B-11	2VM-18513-00	C- 4		C-15	23X-23190-L0	C-14
	E- 4	56A-13616-00	B- 8	24Y-14771-00	B-11	1LX-18531-00	C- 4	2VM-23118-L0	C-14		C-15
	E- 4	39X-13621-01	B- 8	565-14771-00	B-11	34K-18535-00	C- 4		C-15	43M-23191-L0	D- 2
	E- 4	24X-1410A-00	B-10	2VM-1490J-00	B- 9	2VM-18540-00	C- 4		E- 3	43M-23192-L0	D- 2
	E- 4	2VM-14101-10	B- 9	2VM-15111-00	B-12	2VM-21110-00-UJ	C- 6	4H7-23119-00	C-14	2VM-23340-L0	C-15
2VM-11635-00	B- 5	23X-14103-00	B- 9	4V4-15118-00	B-12	1HX-2135F-00	C-11		C-15	3R4-23389-00	C-13
	E- 4	23X-14104-00	B- 9	2VM-15121-00	B-12	21V-21376-00	E- 2	55Y-23126-M0	C-14	5Y3-23393-00	C-15
2VM-11636-00	B- 5	23X-14106-00	B- 9	1G8-15362-00	B-13	24Y-21415-00	C- 6		C-15	2VN-23395-00	C-13
	E- 4	23X-14107-35	B- 9	56A-15383-00	B-12	2VM-21425-00	C- 6	4V4-23125-L0	C-14	2HG-23416-00	C-13
2VM-11637-00	B- 5	2X8-14112-25	B- 9	2VM-15411-00	B-13	5X6-21511-11	C- 7		C-15	2HG-23435-00-98	C-13
	E- 4	2X8-14112-30	B- 9	2VM-15421-00	B-13	1LX-21611-00	C- 7	2VM-23126-L0	C-14	1E6-23441-00	C-13

NUMERICAL INDEX

PART NO.	GRID NO.	PART NO.	GRID NO.	PART NO.	GRID NO.	PART NO.	GRID NO.	PART NO.	GRID NO.	PART NO.	GRID NO.
5X6-23485-11	C-13	2VN-25850-50	D-13	23X-83912-00	D-15	90170-06010	D-15	90201-154F5	B- 4	90387-202U8	D- 7
43M-23489-LO	D- 2	2VN-25852-00	D-11	55Y-83922-00	D-15	90170-10372	C-14	90201-154F6	B- 4	90387-252F6	B-15
2VM-24110-00	D- 3	2VN-25852-50	D-13	25G-83936-00	E- 2		C-15	90201-164H4	C-10	90387-25663	C- 2
5X6-2412F-00	D- 3	2VN-25854-00	D-13	437-83936-00	C- 7	90170-20255	B-15		C-11	90401-10034	D-11
24X-24144-00	D- 3	56A-25854-00	D-11		D-15	90170-24373	C-13	90201-17545	B-14		D-13
59V-24173-00	D- 3	2VN-25855-00	D-13	437-83936-10	B- 7	90176-08026	B- 2	90201-20278	C- 2	90430-06016	B-13
1LX-24181-00	D- 3	2VN-25866-00	D-13		D-14	90179-08401	D-10	90201-20358	B-14	90430-06166	B- 6
22W-24181-00	C- 8	56A-25867-00	D-11	23X-83976-00	D-15	90179-10544	C-10	90201-22555	C- 2	90430-12038	B-12
23X-24184-00	D- 3	2VN-25870-00	D-11	2VM-85510-KO	D-14	90179-18172	B-15	90201-247L2	C-13	90445-08605	B-12
2VM-24240-00	C- 8	1RG-25872-10	D-11			90179-20255	C- 3	90201-253K0	C- 2	90445-09100	D- 3
2VM-24250-00	C- 8	2VN-25872-50	D-13	2HH-85540-KO	E- 2	90179-28543	C-13	90202-06010	D- 3	90445-11452	D- 3
2VN-24500-00	D- 3	2VM-25876-00	D-13	2K7-85547-00	E- 2	90185-10115	C-12	90202-08022	C- 6	90446-09079	B- 7
4X8-24512-00	D- 3	2VN-25894-00	D-13	2VM-85550-KO	D-14	90185-10120	C-12	90208-18025	B-15	90450-22017	B- 7
4X8-24534-00	D- 3	2VN-25895-00	D-13			90185-14112	C-11	90209-17235	C- 2	90450-28014	B- 7
5X7-24611-01	D- 3	5R2-25917-00	D- 6	90101-08475	D- 9	90185-16127	C-10	90209-18135	C- 2	90460-12268	B- 7
5X7-24612-00	D- 3	2KF-25919-00	D- 9	90105-06138	D- 6	90185-18104	D- 8	90209-18244	D- 8	90460-51109	B- 8
3L7-24724-00	D- 4	56A-25919-00	D- 6	90105-08463	D- 2	90201-057K1	B- 4	90209-21243	D- 8	90460-68199	B- 8
509-24724-00	D- 4	56A-25919-10	D- 6	90105-08498	D- 9	90201-06067	C-10	90209-22082	C- 2	90465-13154	D-10
2VM-24731-10	D- 4	2GV-25926-00	D- 9	90109-06551	D- 9	90201-06070	D- 3	90209-25085	B- 5	90465-16258	D-10
1LX-24738-01	D- 4	56A-25926-00	D- 6	90109-06557	D- 9	90201-063A5	C- 8		E- 4	90467-09006	B- 7
5X6-24748-10	D- 4	34X-25937-00	D- 9	90109-06757	D- 6	90201-06570	B- 7	90215-20231	B-15	90467-10008	D- 3
2VM-24770-00	D- 4	5R2-25937-00	D- 9	90109-06797	D-15	90201-06571	C- 7	90215-21239	C- 3	90467-11044	D-13
1LX-25104-00	D- 5	56A-25937-00	D- 6	90109-08512	B-11		C- 8	90240-08120	C- 8	90468-26048	B-14
2HH-25111-00-98	D- 5	2VN-26111-00	D-10	90109-08792	D- 7		C- 8	90240-10117	D-12	90480-15064	B- 7
322-25118-00	D- 5	1LX-26241-01	D-10	90109-102E6	C-12	90201-08087	C-13	90280-03045	B- 5	90480-18276	B- 7
55U-25181-00	D- 5	1LX-26242-01	D-10	90109-10704	C-12	90201-081A6	B- 2	90340-12095	B-12	90480-18354	D- 3
2VN-25304-00	D- 7	23X-26243-00	D-10	90109-145E4	C-11		C- 6	90380-15104	B- 4	90501-10312	D-15
2VN-25311-00-98	D- 7	5X2-2628H-01	D-10	90109-145E5	C-11	90201-082A9	D-15	90380-16158	D- 7	90501-13720	B-14
23X-25381-00	D- 7	23X-26281-00	D-10	90116-08392	B- 2	90201-08544	D-12	90381-16060	C-10	90501-23598	B-15
56A-25388-01	D- 7	431-26282-01-98	D-10	90116-08394	B- 2	90201-08612	D-12	90387-06387	D- 3	90501-240F4	B- 4
2J5-25394-01	D- 5	23X-26311-01	D-10	90116-10314	B- 2	90201-087A9	B-14	90387-06681	C- 7	90504-03033	B- 8
39X-25394-00	D- 7	510-26329-00	D-10		B- 2	90201-087A9	B-14	90387-07392	B- 7	90506-14410	D-12
39W-25444-00	D- 7	2VM-26335-00	D-10	90119-06042	B- 2	90201-08730	B-11	90387-07573	B- 7	90507-20030	B-11
39W-25445-00	D- 7	382-26372-01	D-10	90119-06063	C- 7		D-12	90387-081A3	D-12	90508-20583	D-12
39W-25446-00	D- 7	56A-26372-00	D-11	90119-06081	C- 7	90201-08759	B- 6	90387-086N4	B-11	90508-20583	D-12
39W-25448-00	D- 7	2VM-27200-01	D-12	90123-08090	B- 8	90201-08784	B- 6	90387-086N4	C- 6	90508-26561	C- 4
2HH-25449-00	D- 7	2VN-27222-00	D-13	90149-06011	D-10	90201-100E9	C-12	90387-102F3	B- 2	90508-29742	C- 5
39W-25450-00	D- 7	1LX-27311-00	D-12	90149-06153	D- 3	90201-101J1	C-12	90387-126H8	C-12	90508-30743	B-14
39W-25452-00	D- 7	2VN-27411-00	D-12	90149-06251	D-15	90201-10118	C- 6	90387-127G8	G-12	90560-08213	B- 4
2HH-25810-00	D- 6	2VN-27421-00	D-12	90152-06010	D- 9		D-11	90387-152F2	D-11	90560-12171	C- 5
2VN-25810-50	D- 9	2KF-27491-00	D- 9	90159-05100	B-14	90201-10119	D-13	90387-156R7	D-13	90560-15240	D- 5
2VN-2582A-50	D-13	1LU-28100-00	C- 6		C- 8	90201-106F2	D-12	90387-157L9	D-12	90560-20278	D- 7
2KF-25827-00	D- 9	24X-82310-10	E- 2		C- 8	90201-10774	C-11	90387-160H4	B-12	90560-22281	D-10
2KF-25828-00	D- 9	3R0-82370-20	E- 2	90159-06013	C- 8	90201-120E6	D-14	90387-164N2	C-10	91002-06010	B-12
2VN-25831-00	D- 6	5X1-82519-01	E- 2		C- 8	90201-12166	C-12	90387-164N3	C-10	91002-08045	C-10
2VN-25831-50	D- 9	688-82535-00	D-10	90159-06016	C- 8	90201-12166	C- 4		C-11	91011-08040	C- 6
34X-25845-00	D- 6	38V-82911-00	D-15	90159-06042	B-15	90201-14740	C-11	90387-167R4	C-11	91011-08045	D- 6
	D- 9	38V-82913-00	D-15	90159-06056	C- 8	90201-154E9	B- 4	90387-167R5	C-10	91011-08055	C- 6
					D-13		B- 4	90387-200H2	D- 7	91011-10016	C-10

NUMERICAL INDEX

PART NO.	GRID NO.	PART NO.	GRID NO.	PART NO.	GRID NO.	PART NO.	GRID NO.	PART NO.	GRID NO.	PART NO.	GRID NO.
91011-10055	C- 6	92990-06100	B-11	93310-418E9	E- 4	95303-08600	D-13	99510-12016	B-12		
91011-10120	C- 6		B-11	93310-425T1	B- 5	95303-08700	D- 7		B-13		
91021-08035	C-13		C- 8		E- 4	95311-10600	D-14	99530-14016	B- 2		
91021-08040	C-13		C- 8	93311-41734	C- 2	95601-05100	B- 4				
91311-06016	D-10		C-15	93311-62035	C- 2		B- 8				
91316-04006	B- 4		D- 3	93315-11206	B-15	95601-08200	C- 6				
91316-06025	B- 6		D- 3	93315-22045	C-11	95601-10200	C- 6				
	B-13		D- 3	93315-22046	C-10	95601-14200	C-11				
91316-06050	B-12	92990-08100	B-11	93317-22262	C-10	95602-08200	C- 6				
91316-06055	B-13		B-11	93317-22263	C-10		C-10				
91316-06065	B- 6		C- 9	93332-00067	C-13	95606-06100	D-15				
91316-06070	B-13	92990-10200	C- 6	93332-00068	C-13		D-15				
91401-25015	D-12	93102-12106	C- 5	93342-22208	C-10	95611-08100	D- 7				
	D-12	93102-12224	B-15	93399-99927	C-12	95611-08200	C- 6				
92011-06016	D-13	93102-20281	D- 5	93410-20038	C- 2	95611-10200	C- 6				
92011-08012	D-12	93102-20309	B-14	93410-22039	C- 2	95701-08500	D- 2				
92011-08060	C- 6	93102-22363	B- 5	93440-25084	C- 2	95701-10500	B- 2				
92016-08020	B-14	93102-32337	C- 2	93440-30113	C-12	95816-06025	B- 6				
92501-06010	B-11	93103-10147	B- 6	93450-19052	B- 5	97001-06020	B- 7				
92501-06012	B-12	93103-40091	B- 5		E- 4	97001-06030	B- 7				
	C-13	93104-08040	B- 4		E- 4	97001-08050	C- 9				
	D- 3	93104-16074	B- 2		E- 4	97001-08060	B-11				
	D- 4	93104-18077	C-12		E- 4	97013-06035	D- 3				
92501-06014	C- 8	93106-22019	C-10	93450-28063	C-11	97016-06025	D-11				
	C- 8	93106-28023	D- 7		C-11	97313-06016	B-11				
92501-06020	D-14	93108-35004	C-10	93501-04011	B-14		D- 3				
92502-06016	E- 2	93109-20029	C-10	93511-32027	B-15	97313-08016	B-11				
92506-06008	B-13		C-11	93521-64032	B- 4	97801-03008	D- 3				
92516-06030	B-13	93210-09192	B- 2	93603-14179	B- 4	98001-06020	C-10				
92701-06012	B-12	93210-14104	B-13	93603-22028	B- 6	98021-06025	C- 5				
92901-05600	B- 4	93210-15620	D-13	93604-10011	B- 6	98501-04006	C-12				
92901-06200	D- 4	93210-19216	B-14	93608-25150	C- 5	98501-05012	C- 9				
92901-06600	B- 7	93210-27244	B- 2	93834-13030	C- 2	98501-05016	B- 9				
	B- 7	93210-56743	B-11	93834-14050	C- 2	98506-04018	D- 2				
	B-11	93210-77363	B- 2	93834-15076	C- 3	98506-05010	B- 2				
	D- 3	93211-11770	B- 2	94330-21084	D- 5	98506-05012	B- 2				
	D-10	93300-20501	C- 2	94340-18086	D- 7	98506-05014	B- 3				
	D-14	93300-60814	B- 4	94416-21455	D- 5	98506-05016	D-10				
92901-08200	C- 8		B- 4	94421-18456	D- 7	98506-05018	B- 3				
	C-10	93300-60816	C- 6	94585-20114	D- 8		D-15				
92901-08600	B-11	93306-00406	D- 7	94685-20001	D- 8	98580-03006	B- 8				
	C- 9	93306-00418	D- 7	94702-00323	B- 2	98580-05010	D-13				
92906-05100	D-15	93306-20209	D- 5	95023-06012	D- 4	98706-04012	D-10				
92906-06600	B-13	93306-20574	C- 2	95023-06016	D- 9		D-11				
	D-11	93306-37802	B- 5	95023-08016	D- 4	98980-06020	D- 3				
92990-03100	B- 8		B- 5	95023-08045	C- 6	99009-06600	B- 6				
92990-05100	B- 9	93310-23077	B-15	95026-06012	B-13	99009-17400	B-14				
92990-05200	B- 8	93310-418E9	B- 5	95026-06020	B- 8	99510-10114	B- 2				

